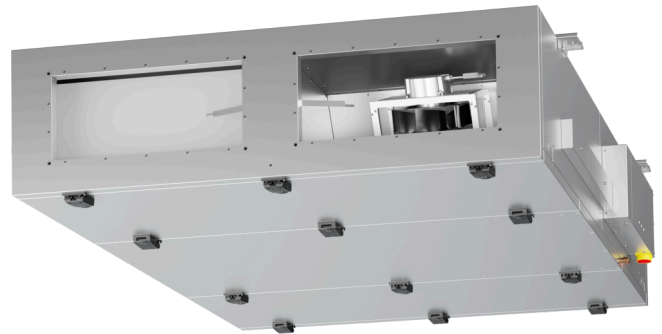


# ETA K 2800 F OOJR

171600

---

- Flat air handling unit with counter flow heat exchanger
- Ceiling mounting, version right
- Frameless, double wall housing made of galvanized steel sheet, insulated
- Automatic summer bypass
- Without heating, without cooling, panel filter F7/M5
- Constructed acc. to VDI 6022
- Attention: Please note the calculated cooling/heating capacity and the displayed volume of the DX coils



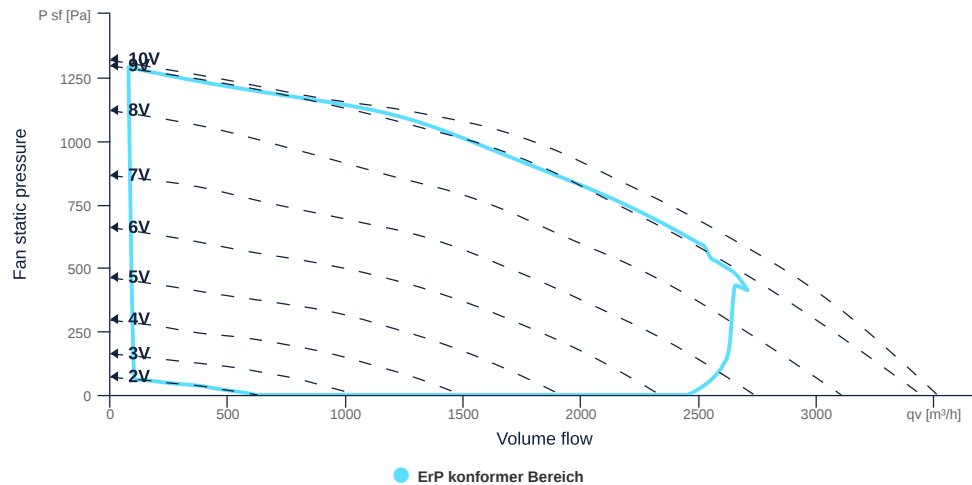
to the product detail page

# ETA K 2800 F OOJR

171600

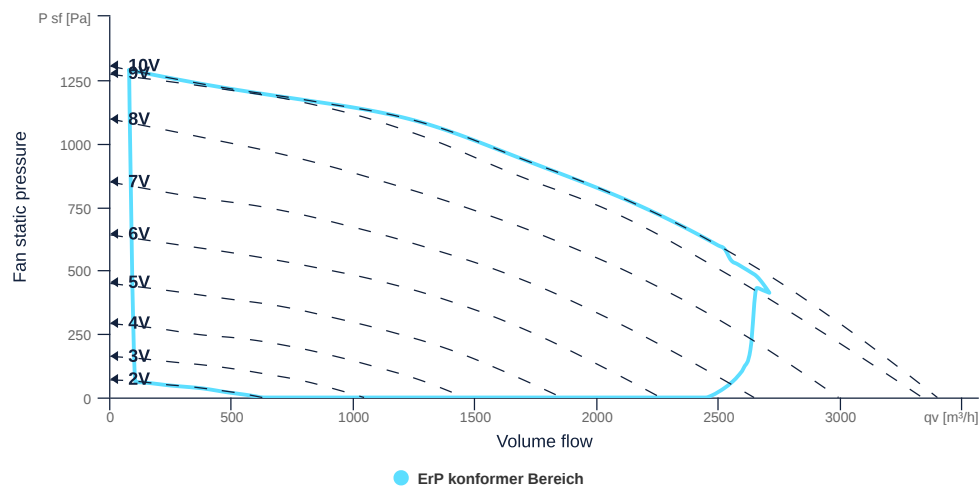
## MAP

Name	Value	Unit
Volume flow	0	m³/h
Pressure	0	Pa



## EXTRACT AIR MAP

Name	Value	Unit
Volume flow	0	m³/h
Pressure	0	Pa



to the product detail page

# ETA K 2800 F OOJR

171600



## GENERAL DATA

Name	Value	Unit	Formula symbol
Labeling	CE, UKCA		
Duct size	700x300		WxH <sub>duct</sub>
Rated voltage (entire device)	400	V	U <sub>rated</sub>
Phases (entire device)	3-N		phase
Electrical protection (entire device)	6 A		fuse
Housing material	Galvanized steel		mat <sub>casing</sub>
IP-protection class (casing)	IP41		IP <sub>casing</sub>
IP-protection class (entire device)	IP41		IP <sub>compl</sub>
IP-Protection class (terminal box)	IP44		IP <sub>ebox</sub>
Nominal air flow rate, nominal point m <sup>3</sup> /h	2368.8	m <sup>3</sup> /h	q <sub>v,nom</sub>
Nominal external pressure, static	200	Pa	p <sub>s,nom</sub>
Connection side supply air	Right		L/R
Type of the ventilation-unit	BVU - supply air		AHU <sub>type</sub>
Type of heat-recovery-system	recuperative		HRS <sub>type</sub>
Type of the heater	No		H <sub>type</sub>
Type of cooler	No		C <sub>type</sub>
Outdoor installation	No		outdoor
Speed control	variable speed control		VSD <sub>type</sub>
Filter class extract air	ISO ePM10 50%		F <sub>class, eta</sub>
Filter class supply air	ISO ePM1 55%		F <sub>class, sup</sub>

## ERP DATA (LOT 6)

Name	Value	Unit	Formula symbol
Energy performance supply air filter		E	
Energy performance extract air filter		E	
Thermal efficiency HRS, Nominal-point	80.22	%	t <sub>NRVU</sub>
Nominal air flow rate, nominal point m <sup>3</sup> /s	0.66	m <sup>3</sup> /s	q <sub>v,nom</sub>
Actual electrical input power, nominal point	1.13	kW	P <sub>e,nom</sub>
Internal specific fan power, nominal point	1002.98	Ws/m <sup>3</sup>	SFP <sub>int</sub>
Face velocity, nominal point	1.73	m/s	v <sub>nom</sub>
Nominal external pressure, static	200	Pa	p <sub>s,nom</sub>
supply air fan static efficiency, nominal point	53.68	%	η <sub>es,SUP</sub>
static efficiency of the extract fan, nominal point	59.44	%	η <sub>es,EHA</sub>
Enclosure sound level, nominal point	61.81	dB(A)	LWA <sub>2</sub>
Rating	Product is compliant 2018		
Internal pressure drop of ventilation components supply air, nominal point	254.73	Pa	dp <sub>vent,nom,int,SUP</sub>
Internal pressure drop of ventilation components extract air, nominal point	314.12	Pa	dp <sub>vent,nom,int,EHA</sub>



to the product detail page

# ETA K 2800 F OOJR

171600

**ruck**

## MAXIMAL DATA

Name	Value	Unit	Formula symbol
Max. power consumption (device)	2250	W	$P_{ed, max}$
Max. operating current (device)	3.5	A	$I_{ed, max}$
Max. speed	3480	1/min	$n_{max}$
Max. stat. efficiency	43.9	%	$\eta_{es}$
Max. fan efficiency	44	%	$\eta_e$
Max. flowrate	3510	m <sup>3</sup> /h	$q_{v, max}$
Max. stat pressure	1320	Pa	$p_{sf, max}$
Max. medium temperature	40	°C	$T_{m, max}$
Max. environment temperature	40	°C	$T_{amb, max}$
Min. environment temperature	-20	°C	$T_{amb, min}$

## FILTER DATA

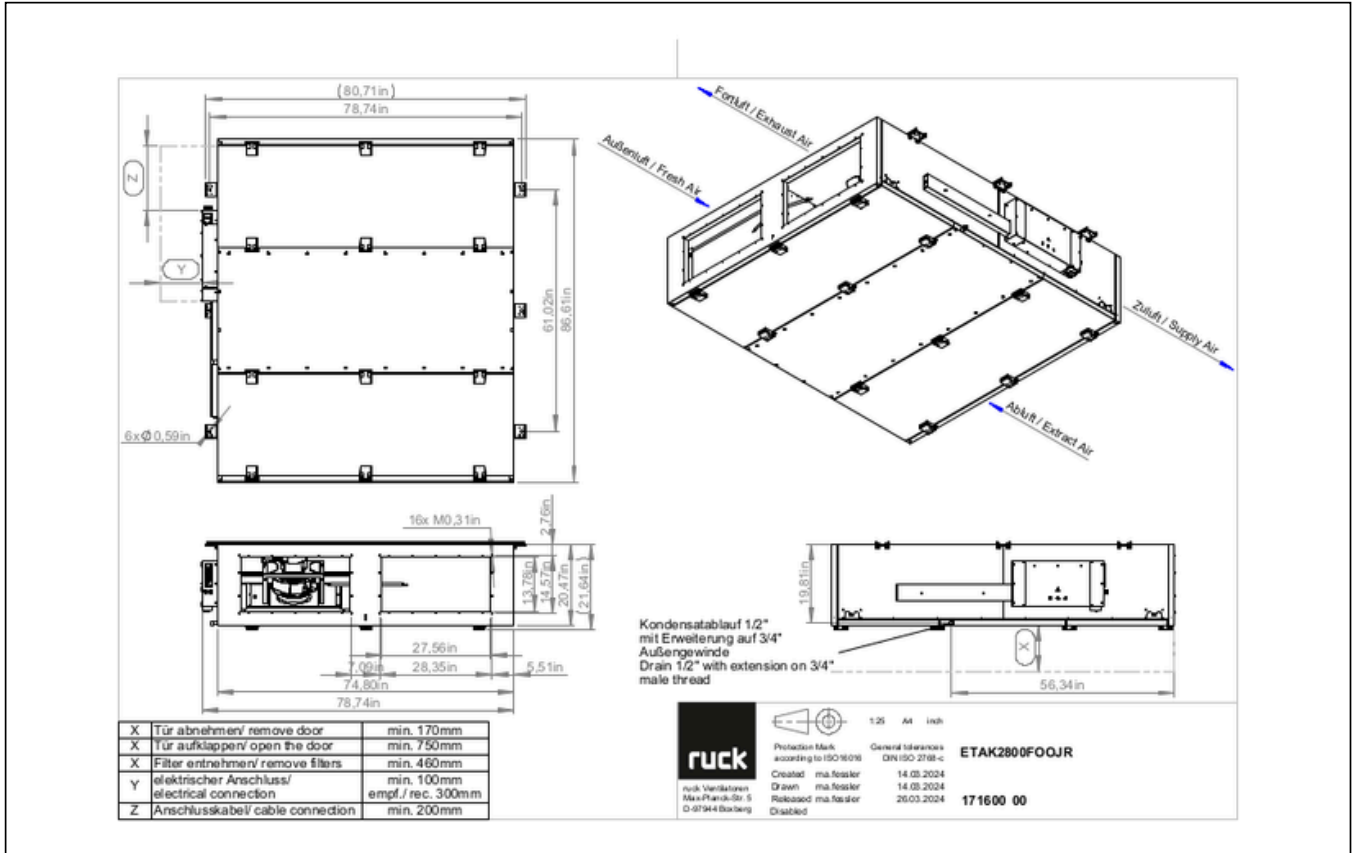
Name	Value	Unit	Formula symbol
Degree of separation (supply air)	55	%	
Degree of separation (extract air)	50	%	
Filter group (extract air)	ISO ePM10		
Filter group (supply air)	ISO ePM1		



# ETA K 2800 F 00JR

171600

## CIRCUIT DIAGRAMS / DIMENSIONAL DRAWINGS



# ETA K 2800 F OOJR

171600

Technical drawing of the ETA K 2800 F OOJR unit. The drawing includes a front view with dimensions (2050, 2000, 1550, 2200, 6xØ 15), a side view with dimensions (16x M8, 70, 350, 300, 500, 550, 180, 700, 720, 140, 1900, 2000), and a perspective view showing airflow directions: 'Fonluft / Exhaust Air', 'Außenluft / Fresh Air', 'Zuluft / Supply Air', and 'Abluft / Extract Air'. A detail view shows a condensation drain with dimensions (50.3, 1431) and a note: 'Kondensatablauf 1/2" mit Erweiterung auf 3/4" Außengewinde Drain 1/2" with extension on 3/4" male thread'.

X	Tür abnehmen/ remove door	min. 170mm
X	Tür aufklappen/ open the door	min. 750mm
X	Filter entnehmen/ remove filters	min. 460mm
Y	elektrischer Anschluss/ electrical connection	min. 100mm empf./ rec. 300mm
Z	Anschlusskabel/ cable connection	min. 200mm

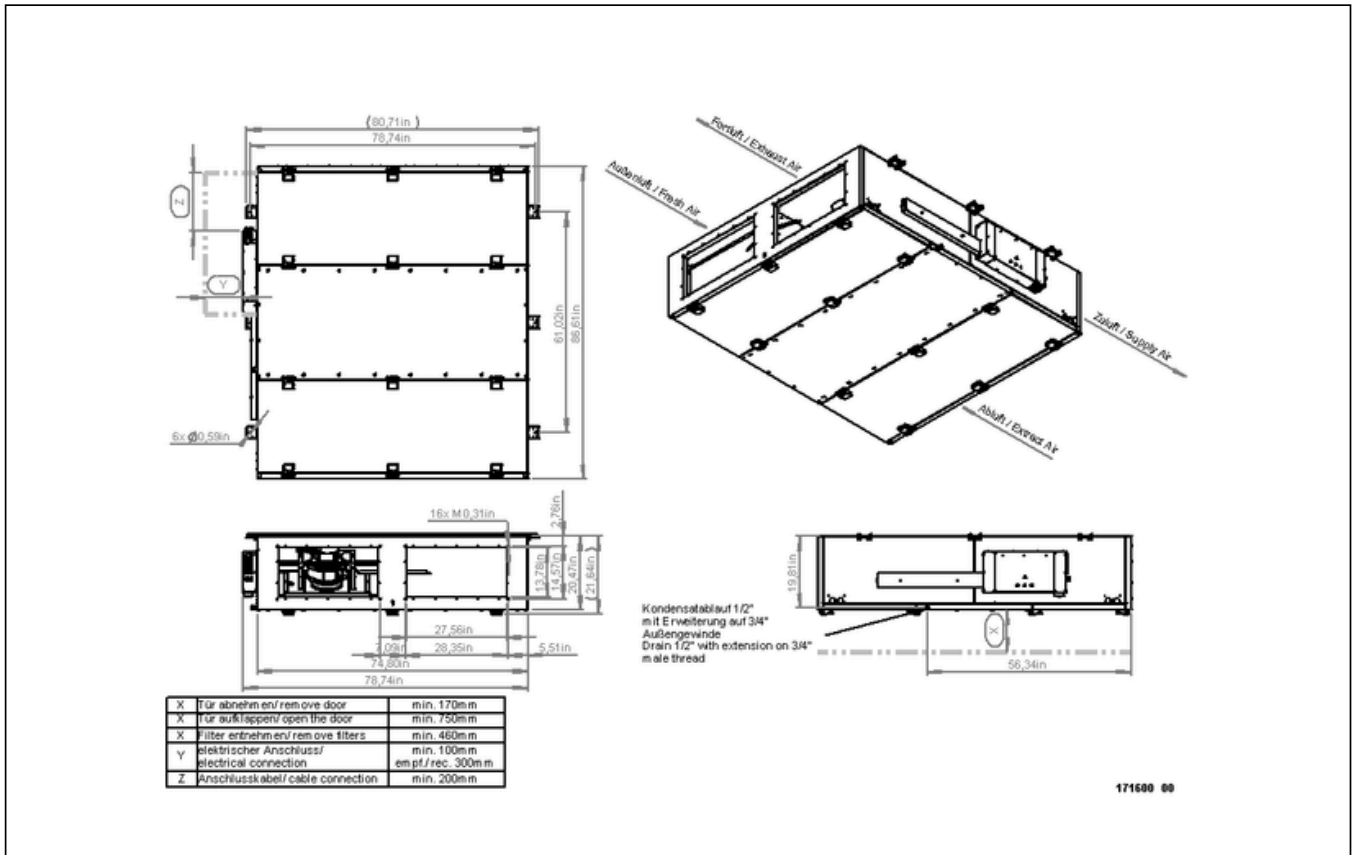
**ruck** Protection Mark according to ISO 9109  
Created: ma.fessler  
Drawn: ma.fessler  
Released: ma.fessler  
Disabled

1:25 A4 mm  
General tolerances DIN ISO 2768-c  
ETAK2800FOOJR  
14.03.2024  
14.03.2024  
26.03.2024  
171600 00



# ETA K 2800 F OOJR

171600



# ETA K 2800 F OOJR

171600

