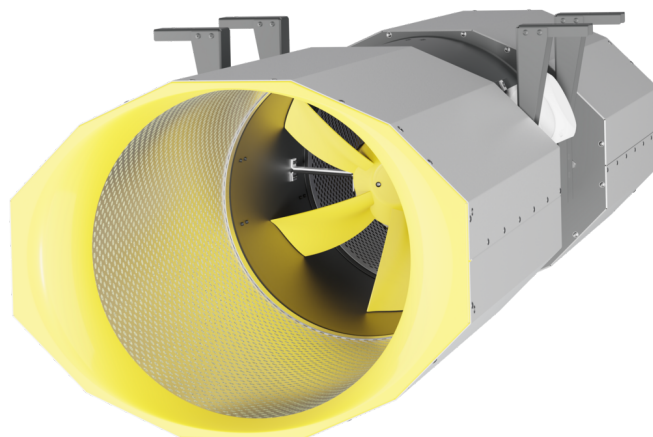


CPA 315 D2 - 01

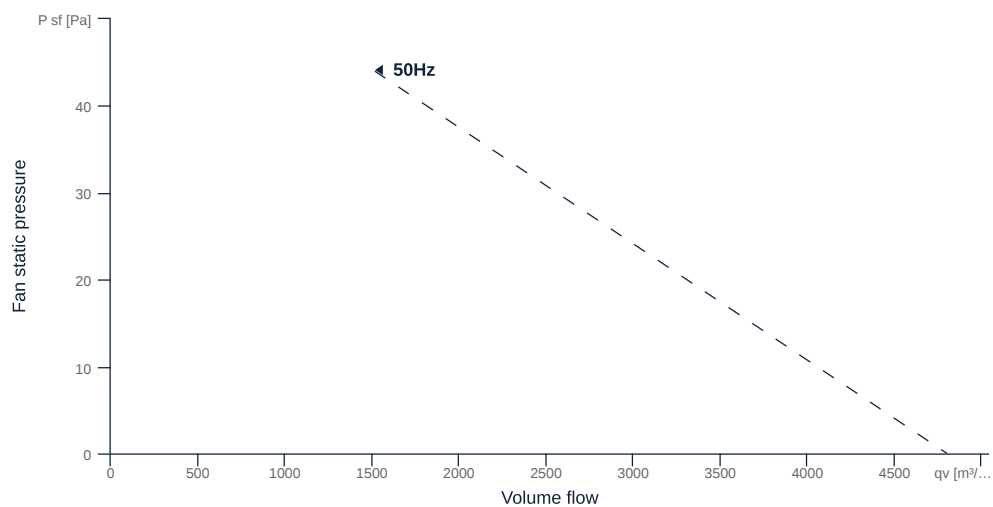
159050

- Innovative high boost axial garage jet fan
- Highest efficiency due to optimized impeller/nozzle
- Housing: weight optimized, AlMg3/steel plate
- IE3 motor 2-step controllable via Dahlander circuit
- Conveyed medium temperature up to 60 °C in continuous operation
- Height adjustment possible during assembly



MAP

Name	Value	Unit
Volume flow	0	m³/h
Pressure	0	Pa



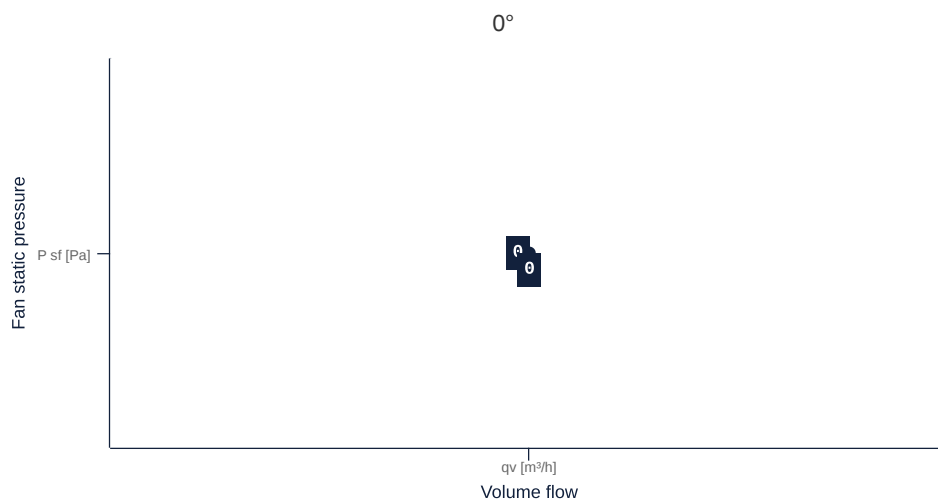
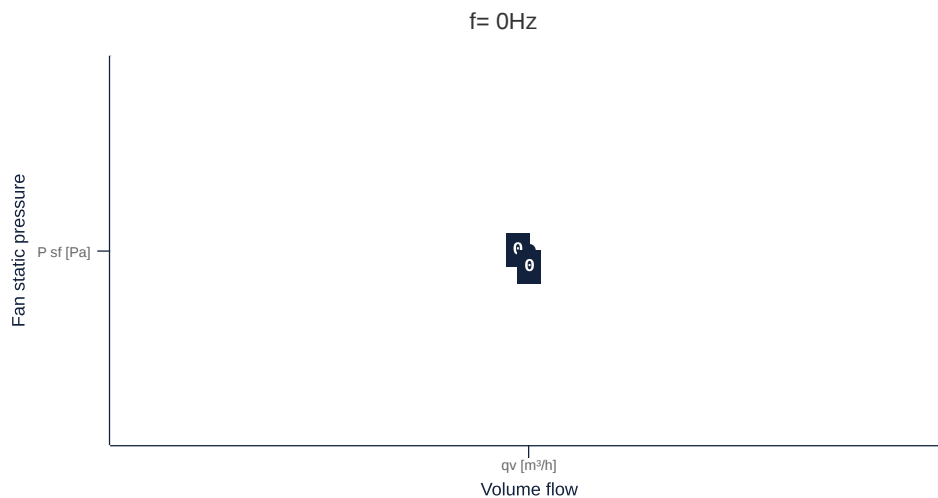
zur Produktseite

CPA 315 D2 - 01

159050

MAP

Name	Value	Unit
Volume flow	0	m ³ /h
Pressure	0	Pa



zur Produktseite

GENERAL DATA

Name	Value	Unit	Formula symbol
ERP conformity	No		
Pipe connection size (DN)	DN315		DN
Rated voltage (entire device)	400	V	U _{rated}
Phases (entire device)	3~		phase
Electrical protection (entire device)	6 A		fuse
Housing material	Steel		mat _{casing}
Impeller material	Steel		mat _{impeller}
IP-protection class (entire device)	IPX4		IP _{compl}
IP-Protection class (terminal box)	IP66		IP _{ebox}
Weight	33.5	kg	m
Fan type	Axial		Fan _{type}
Construction height	346	mm	h
Category / Installation situation	A		cat
Thrust main direction	28.000000		F ₁
Thrust reverse operation	27.000000		F _{1, rev}
Sound power level according to ISO 13350	83.000000		LWA _{ISO13350}

MAXIMAL DATA

Name	Value	Unit	Formula symbol
Max. power consumption (device)	1050	W	P _{ed, max}
Max. operating current (device)	2.25	A	I _{ed, max}
Max. flowrate	4800	m ³ /h	Q _{v, max}
Max. stat pressure	10	Pa	p _{sf, max}
Max. medium temperature	60	°C	T _{m, max}
Max. environment temperature	60	°C	T _{amb, max}
Min. environment temperature	-20	°C	T _{amb, min}
Maximum power consumption 50 Hz in reversing mode	977	W	P _{e, max, rev}
Maximum current consumption 50 Hz in reversing mode	2.17	A	I _{e, max, rev}
Maximum flow rate in reverse operation	4790	m ³ /h	Q _{v, max, rev}

MOTOR DATA

Name	Value		Unit	Formula symbol
	50 Hz	60 Hz		
Rated frequency (device)		50		f
Is pole-changeable		No		pole _{ch}



zur Produktseite