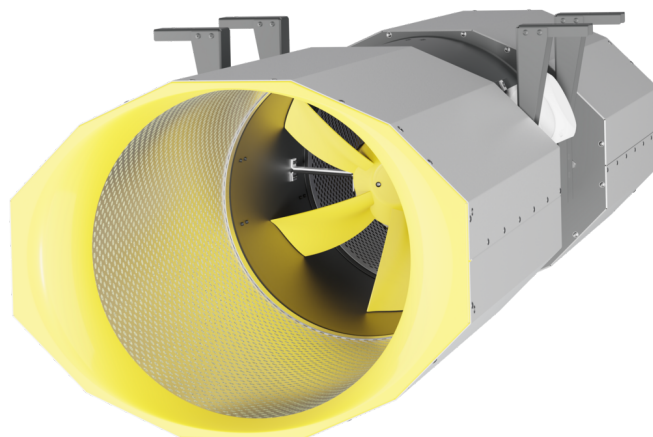


# CPA 400 D42 - 01

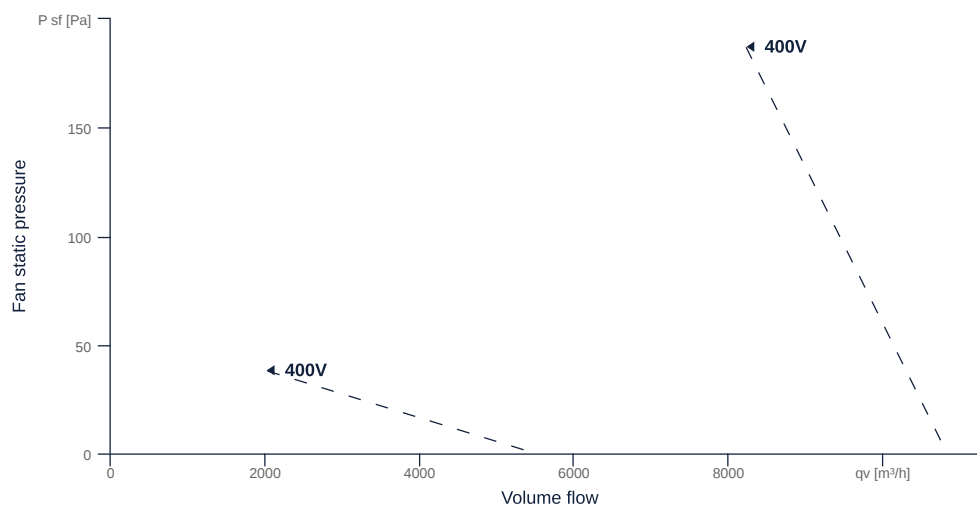
159068

- Innovative high boost axial garage jet fan
- Highest efficiency due to optimized impeller/nozzle
- Housing: weight optimized, AlMg3/steel plate
- IE3 motor 2-step controllable via Dahlander circuit
- Conveyed medium temperature up to 60 °C in continuous operation
- Height adjustment possible during assembly



## MAP

Name	Value	Unit
Volume flow	0	m³/h
Pressure	0	Pa



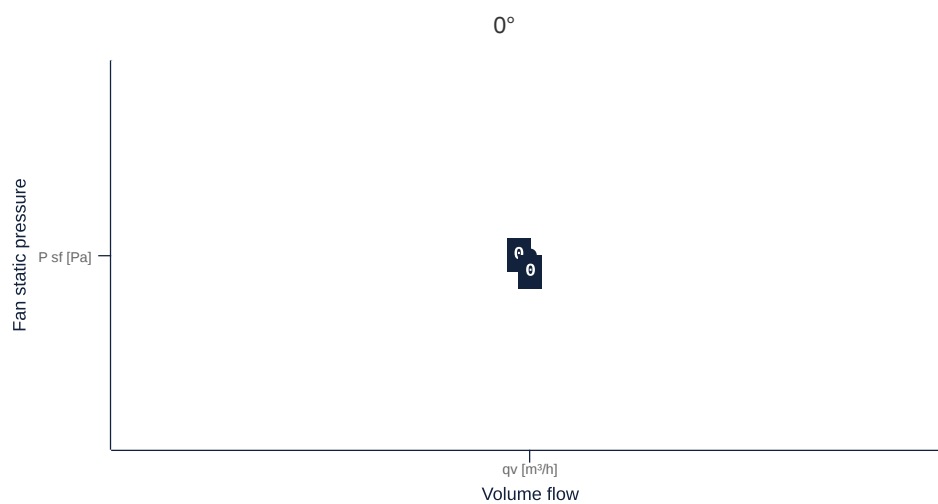
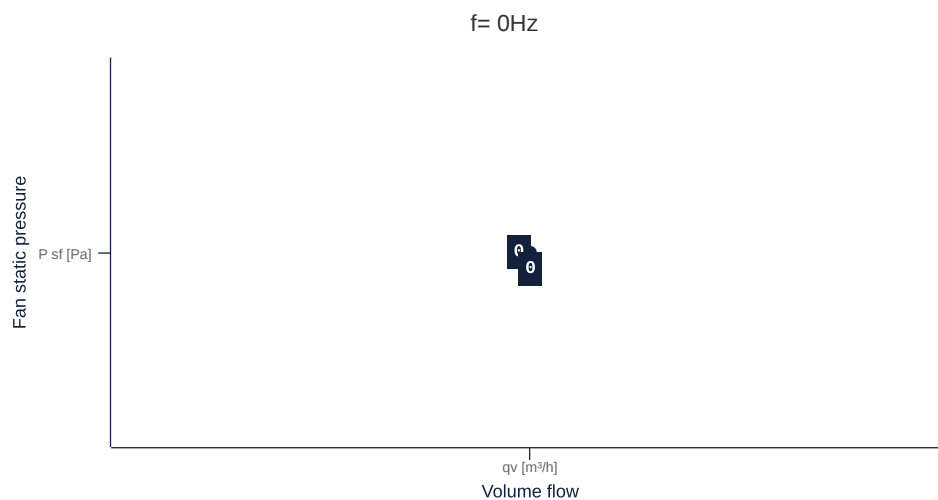
zur Produktseite

# CPA 400 D42 - 01

159068

## MAP

Name	Value	Unit
Volume flow	0	m <sup>3</sup> /h
Pressure	0	Pa



zur Produktseite

## GENERAL DATA

Name	Value	Unit	Formula symbol
ERP conformity	No		
Pipe connection size (DN)	DN400		DN
Rated voltage (entire device)	400	V	U <sub>rated</sub>
Phases (entire device)	3~		phase
Electrical protection (entire device)	6 A		fuse
Housing material	Steel		matcasing
Impeller material	Steel		matimpeller
IP-protection class (entire device)	IPX4		IP <sub>compl</sub>
IP-Protection class (terminal box)	IP66		IP <sub>ebox</sub>
Weight	46	kg	m
Fan type	Axial		Fan <sub>type</sub>
Construction height	431	mm	h
Category / Installation situation	A		cat
Thrust main direction	87.000000		F <sub>1</sub>
Thrust reverse operation	74.000000		F <sub>1, rev</sub>
Sound power level according to ISO 13350	91.000000		LWA <sub>ISO13350</sub>

## MAXIMAL DATA

Name	Value	Unit	Formula symbol
Max. power consumption (device)	2875	W	P <sub>ed, max</sub>
Max. operating current (device)	5.23	A	I <sub>ed, max</sub>
Max. fan efficiency	34.4	%	η <sub>e</sub>
Max. flowrate	10830	m <sup>3</sup> /h	Q <sub>v, max</sub>
Max. stat pressure	10	Pa	p <sub>sf, max</sub>
Max. medium temperature	60	°C	T <sub>m, max</sub>
Max. environment temperature	60	°C	T <sub>amb, max</sub>
Min. environment temperature	-20	°C	T <sub>amb, min</sub>
Maximum power consumption 50 Hz in reversing mode	2595	W	P <sub>e, max, rev</sub>
Maximum current consumption 50 Hz in reversing mode	4.75	A	I <sub>e, max, rev</sub>
Maximum flow rate in reverse operation	10020	m <sup>3</sup> /h	Q <sub>v, max, rev</sub>



## MOTOR DATA

Name	Value		Unit	Formula symbol
	50 Hz	60 Hz		
Rated frequency (device)		50		f
Motor type		AC 3~		phase
Control type		step-controlled		ctrltype
Installation type		IRM (In)		install
Isolation class		ISO F		ISOclass
Protection class		IP55		IP <sub>motor</sub>
Is pole-changeable		Yes		polexch
Type of power supply		AC 3~		pwr <sub>sup</sub> <sub>motor</sub>
Number of poles (1)		4.000000		num poles <sub>w1</sub>
Number of poles (wiring 2)		2.000000		num poles <sub>w2</sub>
Connection	Y	Y		wiring <sub>w1</sub>
Connection (wiring 2)	YY	YY		wiring <sub>w2</sub>
Rated voltage	400	400	V	U <sub>rated, f1</sub>
Rated voltage (wiring 2)	400	400	V	U <sub>rated, f2</sub>
Rated current	1.54	1.48	A	I <sub>rated, f1</sub>
Rated current (wiring 2)	4.63	4.75	A	I <sub>rated, f2</sub>
Shaft power	500	500	W	P <sub>out, f1</sub>
Shaft power (wiring 2)	2200	2200	W	P <sub>out, f2</sub>
Speed	1420	1735	1/min	n <sub>f1</sub>
Speed (wiring 2)	2845	3490	1/min	n <sub>f2</sub>
Efficiency	71	77.5	%	η <sub>m, f1</sub>
Efficiency (wiring 2)	78.9	81.5	%	η <sub>m, f2</sub>
Efficiency class	IE3			IE <sub>motor</sub>
Min. temperature	-20		°C	T <sub>motor, min</sub>



zur Produktseite