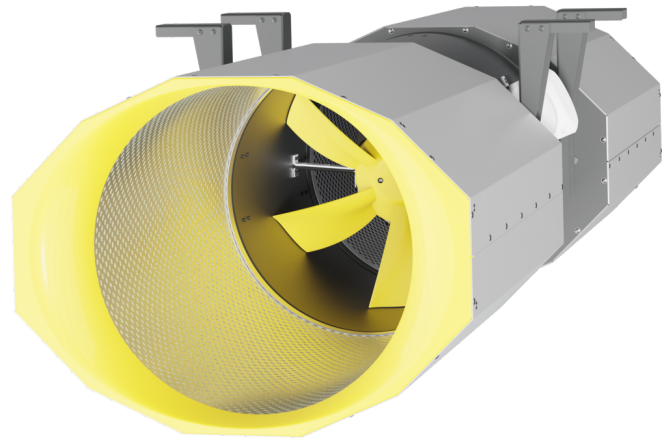


CPA 315 D42 - 01

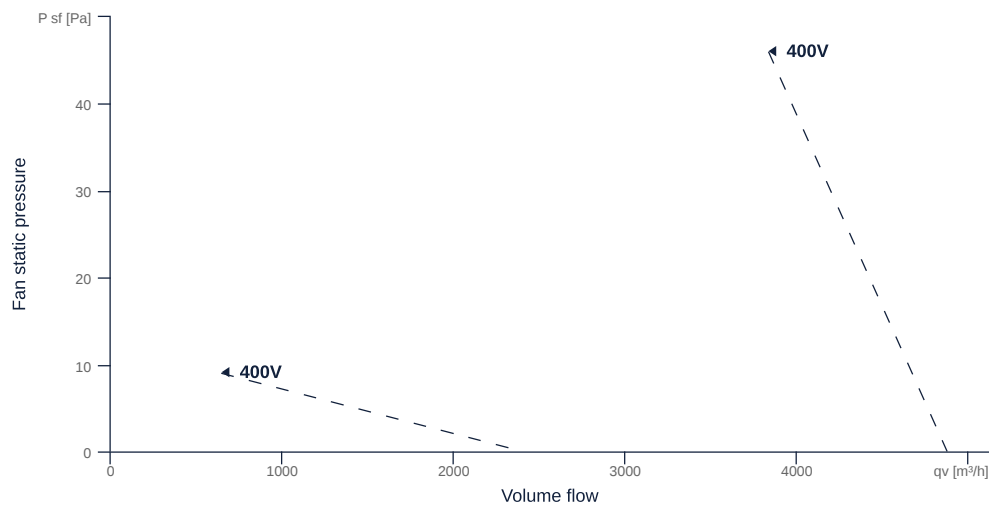
159078

- Innovative high boost axial garage jet fan
- Highest efficiency due to optimized impeller/nozzle
- Housing: weight optimized, AlMg3/steel plate
- IE3 motor 2-step controllable via Dahlander circuit
- Conveyed medium temperature up to 60 °C in continuous operation
- Height adjustment possible during assembly



MAP

Name	Value	Unit
Volume flow	0	m³/h
Pressure	0	Pa



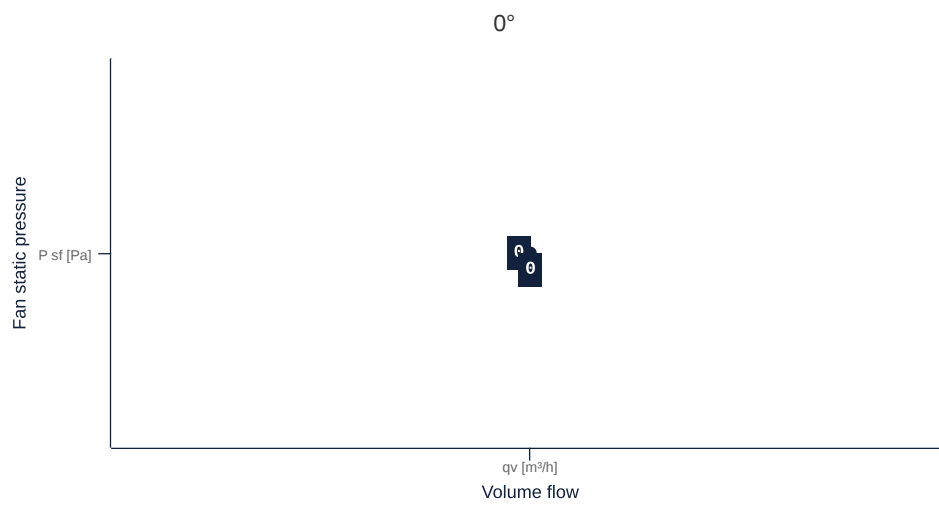
zur Produktseite

CPA 315 D42 - 01

159078

MAP

Name	Value	Unit
Volume flow	0	m ³ /h
Pressure	0	Pa



zur Produktseite

GENERAL DATA

Name	Value	Unit	Formula symbol
ERP conformity	No		
Pipe connection size (DN)	DN315		DN
Rated voltage (entire device)	400	V	U _{rated}
Phases (entire device)	3~		phase
Electrical protection (entire device)	6 A		fuse
Housing material	Steel		mat _{casing}
Impeller material	Steel		mat _{impeller}
IP-protection class (entire device)	IPX4		IP _{compl}
IP-Protection class (terminal box)	IP66		IP _{ebox}
Weight	31.5	kg	m
Fan type	Axial		Fan _{type}
Construction height	346	mm	h
Category / Installation situation	A		cat
Thrust main direction	28.000000		F ₁
Thrust reverse operation	29.000000		F _{1, rev}
Sound power level according to ISO 13350	83.000000		LWA _{ISO13350}

MAXIMAL DATA

Name	Value	Unit	Formula symbol
Max. power consumption (device)	1059	W	P _{ed, max}
Max. operating current (device)	2.1	A	I _{ed, max}
Max. flowrate	4875	m ³ /h	Q _{v, max}
Max. stat pressure	10	Pa	p _{sf, max}
Max. medium temperature	60	°C	T _{m, max}
Max. environment temperature	60	°C	T _{amb, max}
Min. environment temperature	-20	°C	T _{amb, min}
Maximum power consumption 50 Hz in reversing mode	991	W	P _{e, max, rev}
Maximum current consumption 50 Hz in reversing mode	2.01	A	I _{e, max, rev}
Maximum flow rate in reverse operation	4910	m ³ /h	Q _{v, max, rev}



MOTOR DATA

Name	Value		Unit	Formula symbol
	50 Hz	60 Hz		
Rated frequency (device)		50		f
Motor type		AC 3~		phase
Control type		step-controlled		ctrltype
Installation type		IRM (In)		install
Isolation class		ISO F		ISOclass
Protection class		IP55		IP _{motor}
Is pole-changeable		Yes		polexch
Type of power supply		AC 3~		pwr _{sup} _{motor}
Number of poles (1)		4.000000		num poles _{w1}
Number of poles (wiring 2)		2.000000		num poles _{w2}
Connection	Y	Y		wiring _{w1}
Connection (wiring 2)	YY	YY		wiring _{w2}
Rated voltage	400	400	V	U _{rated, f1}
Rated voltage (wiring 2)	400	400	V	U _{rated, f2}
Rated current	0.75	0.73	A	I _{rated, f1}
Rated current (wiring 2)	2.41	2.44	A	I _{rated, f2}
Shaft power	250	250	W	P _{out, f1}
Shaft power (wiring 2)	1100	1100	W	P _{out, f2}
Speed	1390	1685	1/min	n _{f1}
Speed (wiring 2)	2810	3405	1/min	n _{f2}
Efficiency	70.5	70.5	%	η _{m, f1}
Efficiency (wiring 2)	75	76.5	%	η _{m, f2}
Efficiency class	IE3			IE _{motor}
Min. temperature	-20		°C	T _{motor, min}

