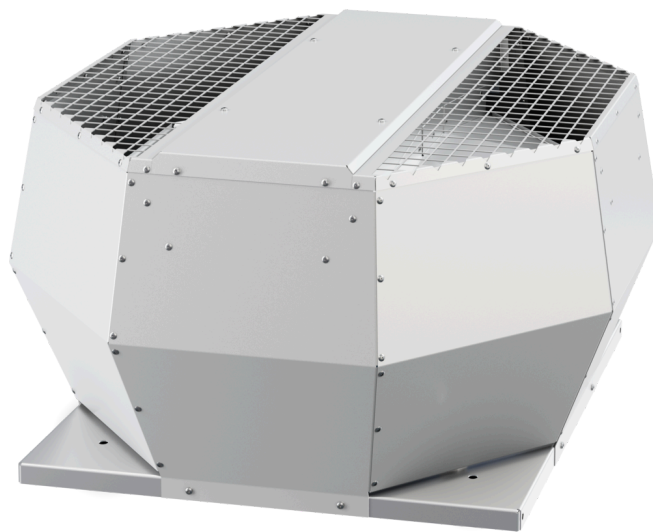


DVA 450 EC O C 01

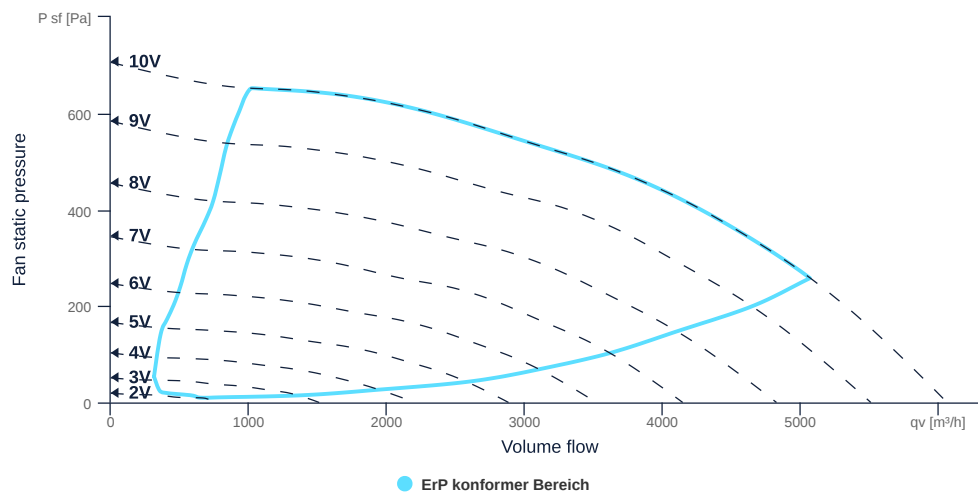
166832

- Backward curved radial impeller
- Vertical discharge
- Housing made of aluminium AlMg3
- High efficiency EC motor, steplessly controllable
- Conveyed medium temperature up to 60 °C in continuous operation
- Integrated constant pressure control



MAP

Name	Value	Unit
Volume flow	0	m³/h
Pressure	0	Pa



to the product detail page

DVA 450 EC O C 01

166832

ruck

GENERAL DATA

Name	Value	Unit	Formula symbol
Labeling	CE, UKCA		
Duct size	-		WxHduct
Pipe connection size (DN)	DN400		DN
Rated voltage (entire device)	230	V	U _{rated}
Phases (entire device)	1~		phase
Electrical protection (entire device)	6 A		fuse
Housing material	Aluminium		matcasing
Impeller material	Plastic		matimpeller
IP-protection class (casing)	IP44		IP _{casing}
IP-protection class (entire device)	IPX4		IP _{compl}
Weight	26.1	kg	m
Nominal air flow rate, nominal point m ³ /h	3387.6	m ³ /h	q _{v,nom}
Nominal external pressure, static	480.2	Pa	p _{s,nom}
Fan type	Radial		Fa _{ntype}
Category / Installation situation	A		cat

ERP DATA (LOT 6)

Name	Value	Unit	Formula symbol
Nominal air flow rate, nominal point m ³ /s	0.94	m ³ /s	q _{v,nom}
Actual electrical input power, nominal point	0.76	kW	P _{e,nom}
Face velocity, nominal point	3.9	m/s	v _{nom}
Nominal external pressure, static	480.2	Pa	p _{s,nom}
supply air fan static efficiency, nominal point	63	%	η _{es,SUP}
Enclosure sound level, nominal point	75	dB(A)	L _{WA2}
Rating	Product is compliant 2018		



to the product detail page

DVA 450 EC O C 01

166832

ruck

MOTOR DATA

Name	Value		Unit	Formula symbol
	50 Hz	60 Hz		
Rated frequency (device)		50		f
Motor type		EC		phase
Control type		stepless-controlled		ctrltype
Installation type		ORM (Out)		install
Rotation direction		right		rotation
Isolation class		ISO F		ISOclass
Motor-protection		TEC		protectmotor
Protection class		IP55		IPmotor
Is pole-changeable		No		polexch
Type of power supply		AC 1~		pwrsupmotor
Rated voltage	230	230	V	U _{rated, f1}
Rated current	5.2	5.2	A	I _{rated, f1}
Shaft power	1000	1000	W	P _{out, f1}
Speed	1500	1500	1/min	n _{f1}
Efficiency	74.3	74.3	%	η _{m, f1}
Min. temperature	-20		°C	T _{motor, min}
UL-Certification motor		UL recognized		ULcert



to the product detail page