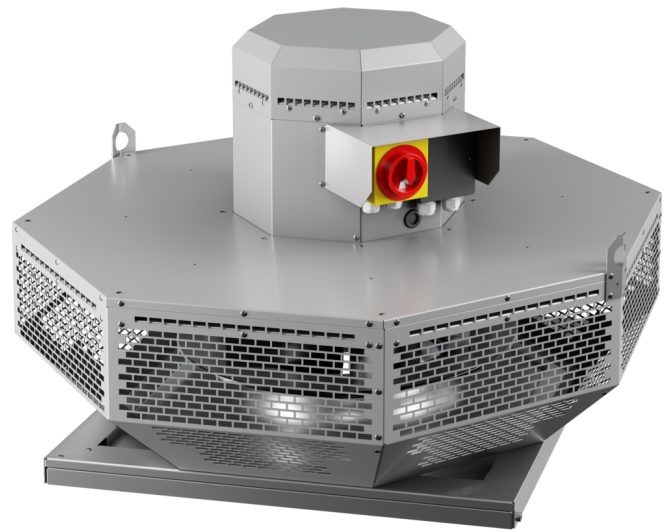


DHL 450 EC RK 01

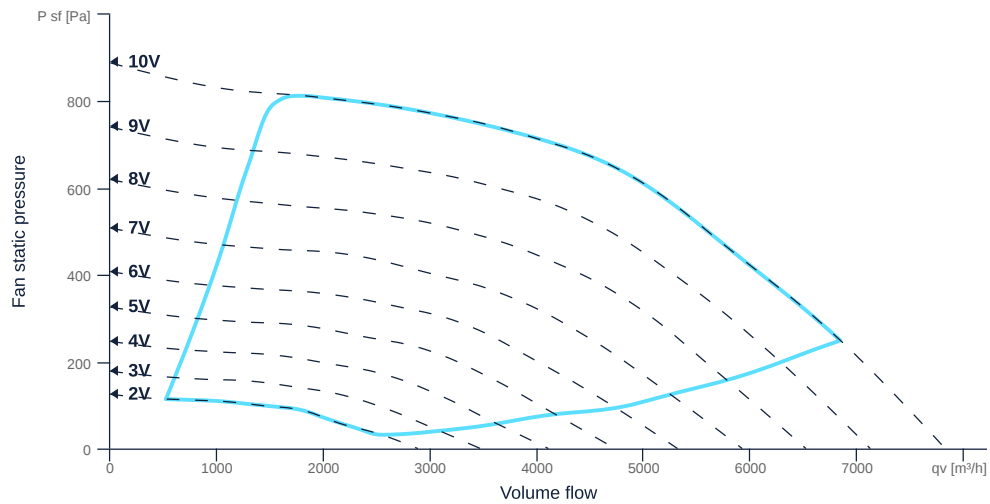
163464

- Backward curved radial impeller
- Horizontal discharge
- Housing made of AlMg3, hinged
- Highly efficient EC motor, steplessly controllable
- Conveyor temperature up to 50 °C in continuous operation
- Integrated main switch



MAP

Name	Value	Unit
Volume flow	0	m³/h
Pressure	0	Pa



zur Produktseite

DHL 450 EC RK 01

163464

ruck

GENERAL DATA

Name	Value	Unit	Formula symbol
ERP conformity	Yes		
Duct size	-		WxH _{duct}
Pipe connection size (DN)	-		DN
Rated voltage (entire device)	230	V	U _{rated}
Phases (entire device)	1~		phase
Electrical protection (entire device)	10 A		fuse
Housing material	Aluminium		mat _{casings}
Impeller material	Steel		mat _{impeller}
Weight	42	kg	m
Nominal air flow rate, nominal point m ³ /h	4892.4	m ³ /h	q _{v,nom}
Nominal external pressure, static	335.4	Pa	p _{s,nom}
Fan type	Radial		Fa _{ntype}
Category / Installation situation	A		cat

ERP DATA (LOT 6)

Name	Value	Unit	Formula symbol
Nominal air flow rate, nominal point m ³ /s	1.36	m ³ /s	q _{v,nom}
Actual electrical input power, nominal point	0.68	kW	P _{e,nom}
Face velocity, nominal point	4.1	m/s	v _{nom}
Nominal external pressure, static	335.4	Pa	p _{s,nom}
supply air fan static efficiency, nominal point	65.8	%	η _{es,SUP}
Enclosure sound level, nominal point	90	dB(A)	L _{WA2}
Rating	Product is compliant 2018		



zur Produktseite