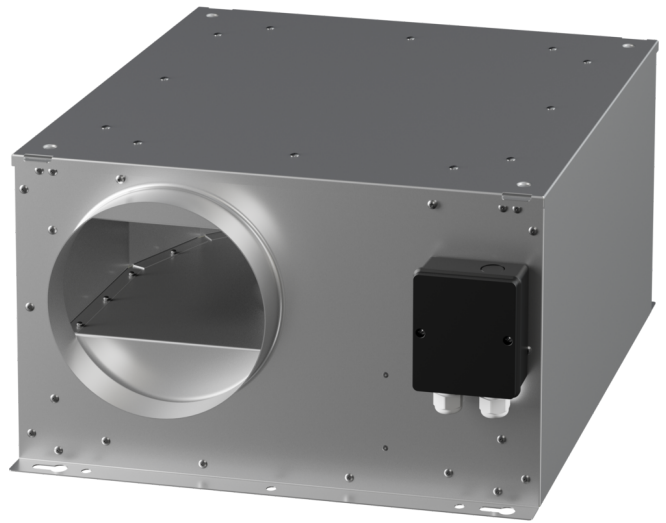


# ISORX 160 EC 20

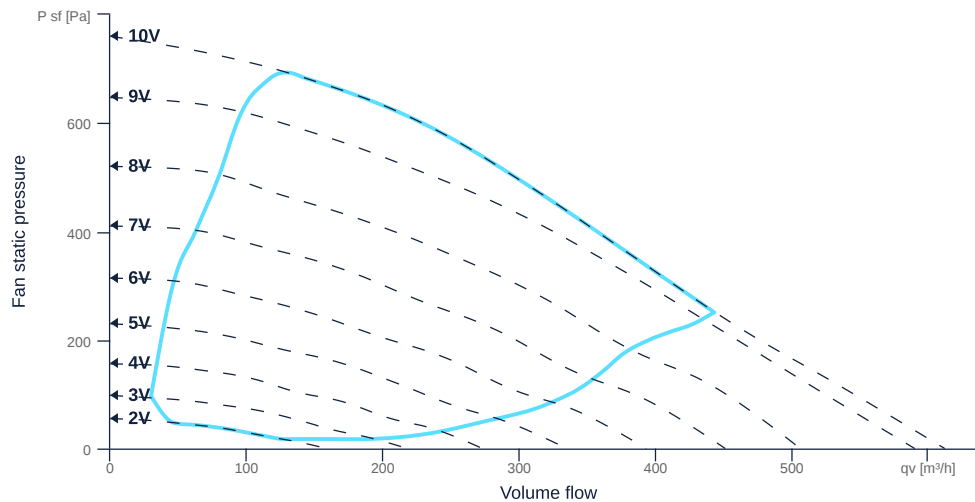
162138

- Backward curved radial impeller
- Optimized aerodynamics
- Soundproof housing made of galvanized sheet steel
- EC motor, external rotor, steplessly controllable
- Conveyed medium temperature up to 60 °C in continuous operation
- Internal electronic temperature monitoring



## MAP

Name	Value	Unit
Volume flow	0	m³/h
Pressure	0	Pa



zur Produktseite

# ISORX 160 EC 20

162138

**ruck**

## GENERAL DATA

Name	Value	Unit	Formula symbol
ERP conformity	Yes		
Duct size	-		WxHduct
Pipe connection size (DN)	DN160		DN
Rated voltage (entire device)	230	V	U <sub>rated</sub>
Phases (entire device)	1~		phase
Electrical protection (entire device)	6 A		fuse
Housing material	Galvanized steel		matcasing
Impeller material	Plastic		matimpeller
Weight	10.9	kg	m
Nominal air flow rate, nominal point m <sup>3</sup> /h	280.8	m <sup>3</sup> /h	q <sub>Vnom</sub>
Nominal external pressure, static	453.8	Pa	p <sub>s,nom</sub>
Fan type	Radial		Fan <sub>type</sub>
Category / Installation situation	A		cat

## ERP DATA (LOT 6)

Name	Value	Unit	Formula symbol
Nominal air flow rate, nominal point m <sup>3</sup> /s	0.08	m <sup>3</sup> /s	q <sub>V,nom</sub>
Actual electrical input power, nominal point	0.09	kW	P <sub>e,nom</sub>
Face velocity, nominal point	3.9	m/s	v <sub>nom</sub>
Nominal external pressure, static	453.8	Pa	p <sub>s,nom</sub>
supply air fan static efficiency, nominal point	45.8	%	η <sub>es,SUP</sub>
Highest external air leakage rate	0.97	%	
Enclosure sound level, nominal point	64	dB(A)	L <sub>WA2</sub>
Rating	Product is compliant 2018		



zur Produktseite