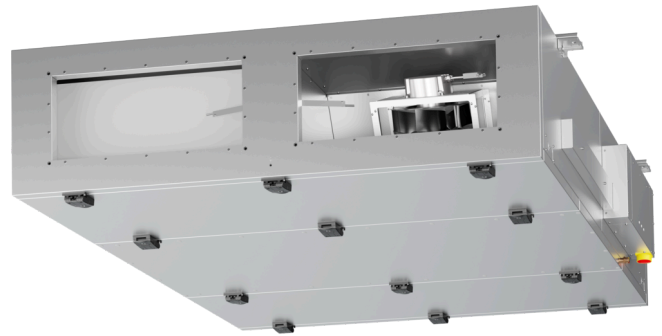


# ETA K 3500 F WOJL

171795

---

- Flat air handling unit with counter flow heat exchanger
- Ceiling mounting, version left
- Frameless, double wall housing made of galvanized steel sheet, insulated
- Constant air flow EC fans, integrated controls
- Automatic summer bypass
- PWW heating, without cooling, panel filter F7/M5
- Constructed acc. to VDI 6022

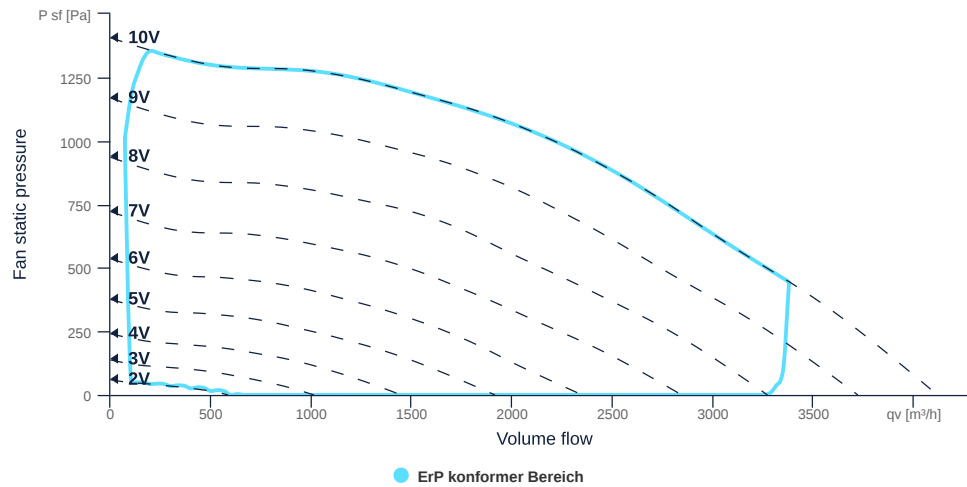


# ETA K 3500 F WOJL

171795

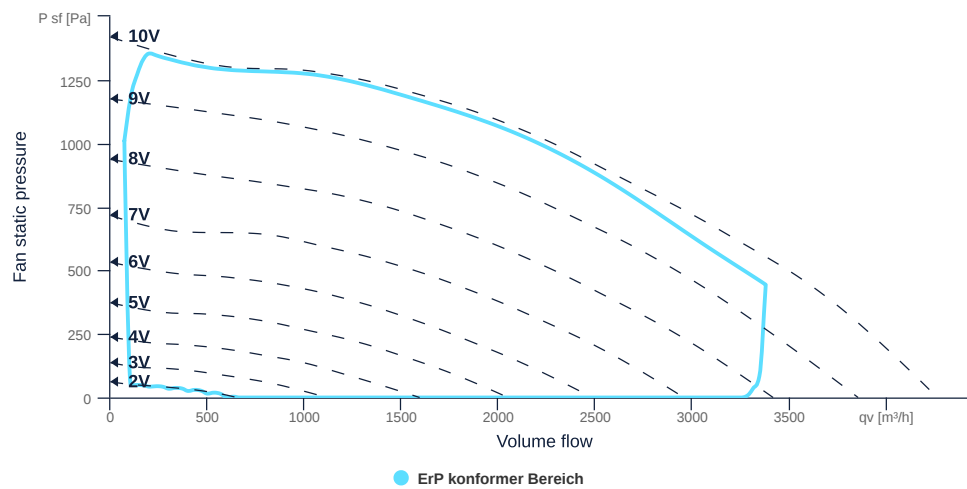
## MAP

Name	Value	Unit
Volume flow	0	m³/h
Pressure	0	Pa



## EXTRACT AIR MAP

Name	Value	Unit
Volume flow	0	m³/h
Pressure	0	Pa



to the product detail page

# ETA K 3500 F WOJL

171795

ruck

## GENERAL DATA

Name	Value	Unit	Formula symbol
Labeling	CE, UKCA		
Duct size	700x400		WxH <sub>duct</sub>
Rated voltage (entire device)	400	V	U <sub>rated</sub>
Phases (entire device)	3-N		phase
Electrical protection (entire device)	6 A		fuse
Housing material	Galvanized steel		mat <sub>casing</sub>
IP-protection class (casing)	IP41		IP <sub>casing</sub>
IP-protection class (entire device)	IP41		IP <sub>compl</sub>
IP-Protection class (terminal box)	IP44		IP <sub>ebox</sub>
Weight	418	kg	m
Nominal air flow rate, nominal point m <sup>3</sup> /h	2930.4	m <sup>3</sup> /h	q <sub>vnom</sub>
Nominal external pressure, static	200	Pa	p <sub>s,nom</sub>
Connection side supply air	Left		L/R
Type of the ventilation-unit	BVU - supply air		AHU <sub>type</sub>
Type of heat-recovery-system	recuperative		HRS <sub>type</sub>
Type of the heater	Hot water		H <sub>type</sub>
Type of cooler	No		C <sub>type</sub>
Outdoor installation	No		outdoor
Leak class	L2		L <sub>class</sub>
Speed control	variable speed control		VSD <sub>type</sub>
Filter class extract air	ISO ePM10 50%		F <sub>class, eta</sub>
Filter class supply air	ISO ePM1 55%		F <sub>class, sup</sub>
Mechanical stability class	D2		D <sub>class</sub>

to the product detail page



## ERP DATA (LOT 6)

Name	Value	Unit	Formula symbol
Energy performance supply air filter		E	
Energy performance extract air filter		E	
Thermal efficiency HRS, Nominal-point	84.83	%	tNRVU
Nominal air flow rate, nominal point m³/s	0.81	m³/s	q <sub>v,nom</sub>
Actual electrical input power, nominal point	1.45	kW	P <sub>e,nom</sub>
Internal specific fan power, nominal point	1081.95	Ws/m³	SFP <sub>int</sub>
Face velocity, nominal point	3.18	m/s	V <sub>nom</sub>
Nominal external pressure, static	200	Pa	p <sub>s,nom</sub>
supply air fan static efficiency, nominal point	54.67	%	η <sub>es,SUP</sub>
static efficiency of the extract fan, nominal point	61.07	%	η <sub>es,EHA</sub>
Highest external air leakage rate	0.67	%	
Enclosure sound level, nominal point	66.76	dB(A)	LWA2
Rating	Product is compliant 2018		
Internal pressure drop of ventilation components supply air, nominal point	282.54	Pa	dp <sub>vent,nom,int,SUP</sub>
Internal pressure drop of ventilation components extract air, nominal point	345.17	Pa	dp <sub>vent,nom,int,EHA</sub>

## MAXIMAL DATA

Name	Value	Unit	Formula symbol
Max. power consumption (device)	3000	W	P <sub>ed,max</sub>
Max. operating current (device)	4.7	A	I <sub>ed,max</sub>
Max. speed	3800	1/min	n <sub>max</sub>
Max. stat. efficiency	43.6	%	η <sub>es</sub>
Max. fan efficiency	43.8	%	η <sub>e</sub>
Max. flowrate	4450	m³/h	q <sub>v,max</sub>
Max. stat pressure	1430	Pa	p <sub>sf,max</sub>
Max. medium temperature	40	°C	T <sub>m,max</sub>
Max. environment temperature	40	°C	T <sub>amb,max</sub>
Min. environment temperature	-20	°C	T <sub>amb,min</sub>

## FILTER DATA

Name	Value	Unit	Formula symbol
Degree of separation (supply air)	55	%	
Degree of separation (extract air)	50	%	
Filter group (extract air)	ISO ePM10		
Fitter group (supply air)	ISO ePM1		

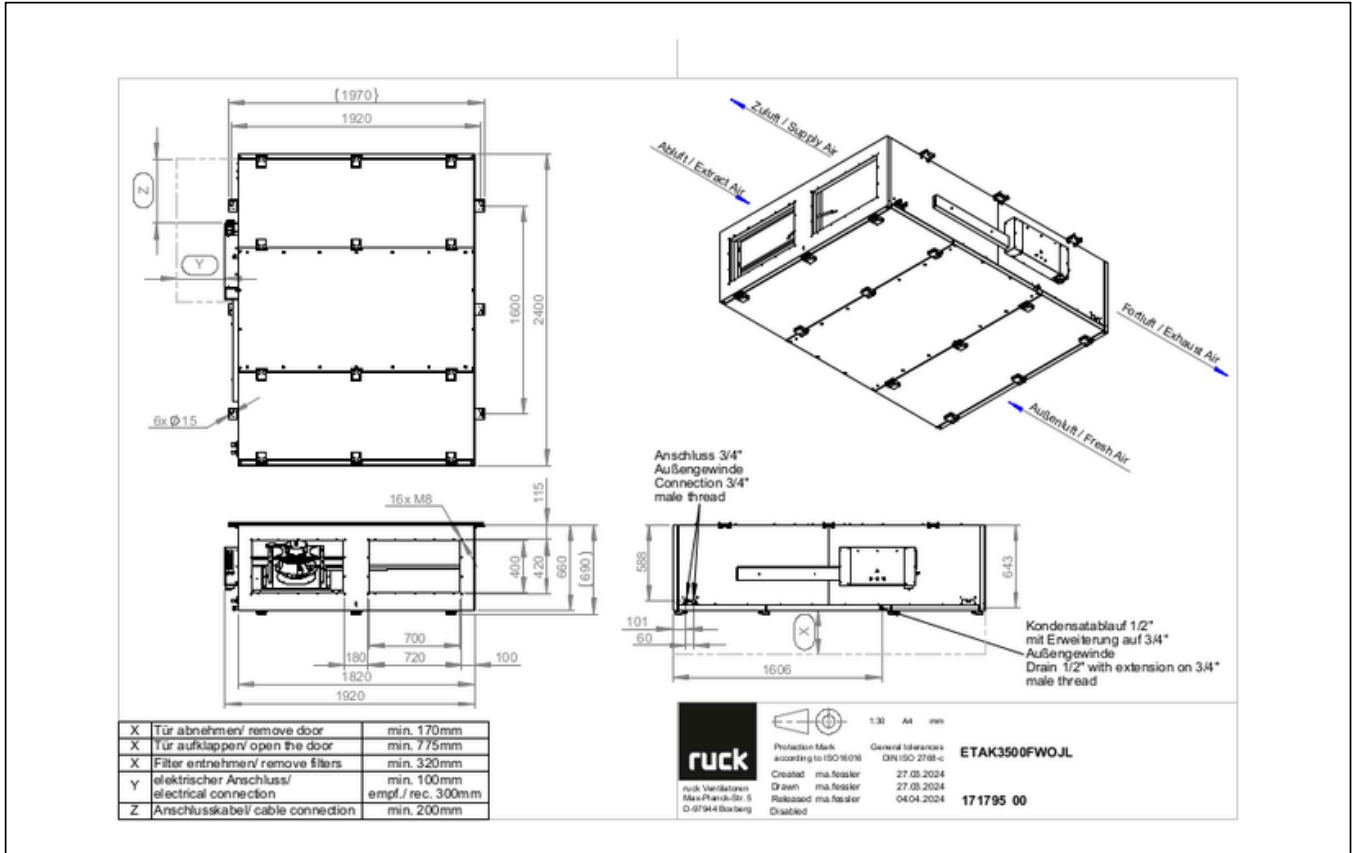


to the product detail page

# ETA K 3500 F WOJL

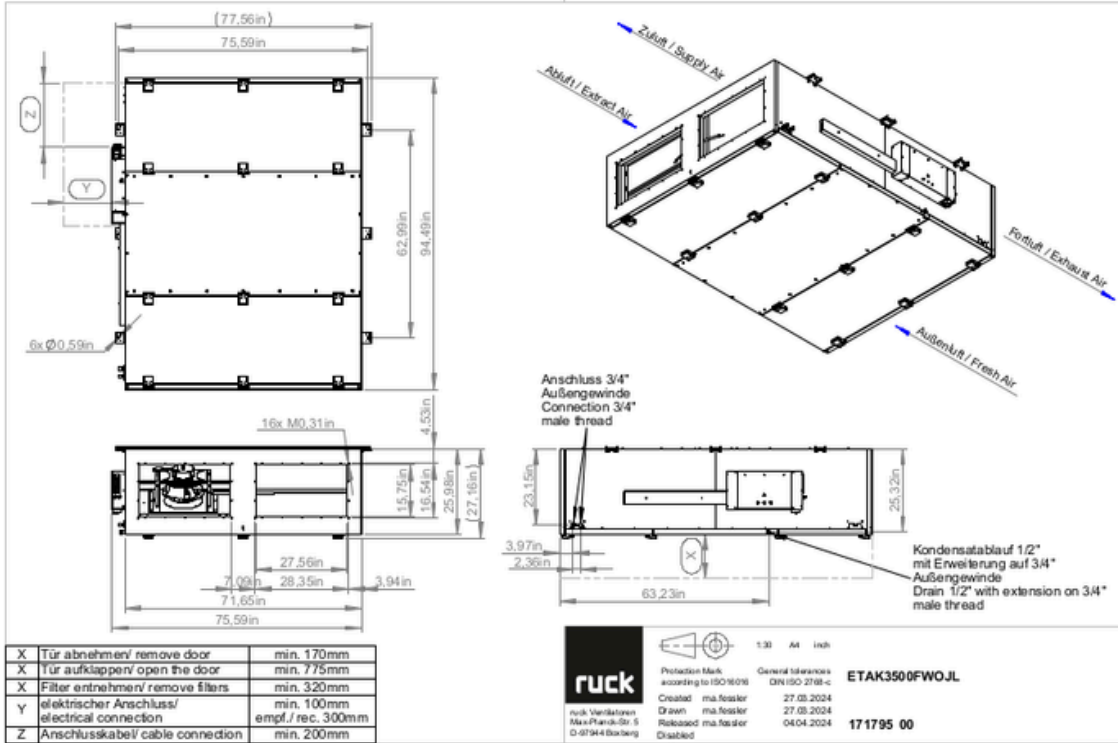
171795

## CIRCUIT DIAGRAMS / DIMENSIONAL DRAWINGS



# ETA K 3500 F WOJL

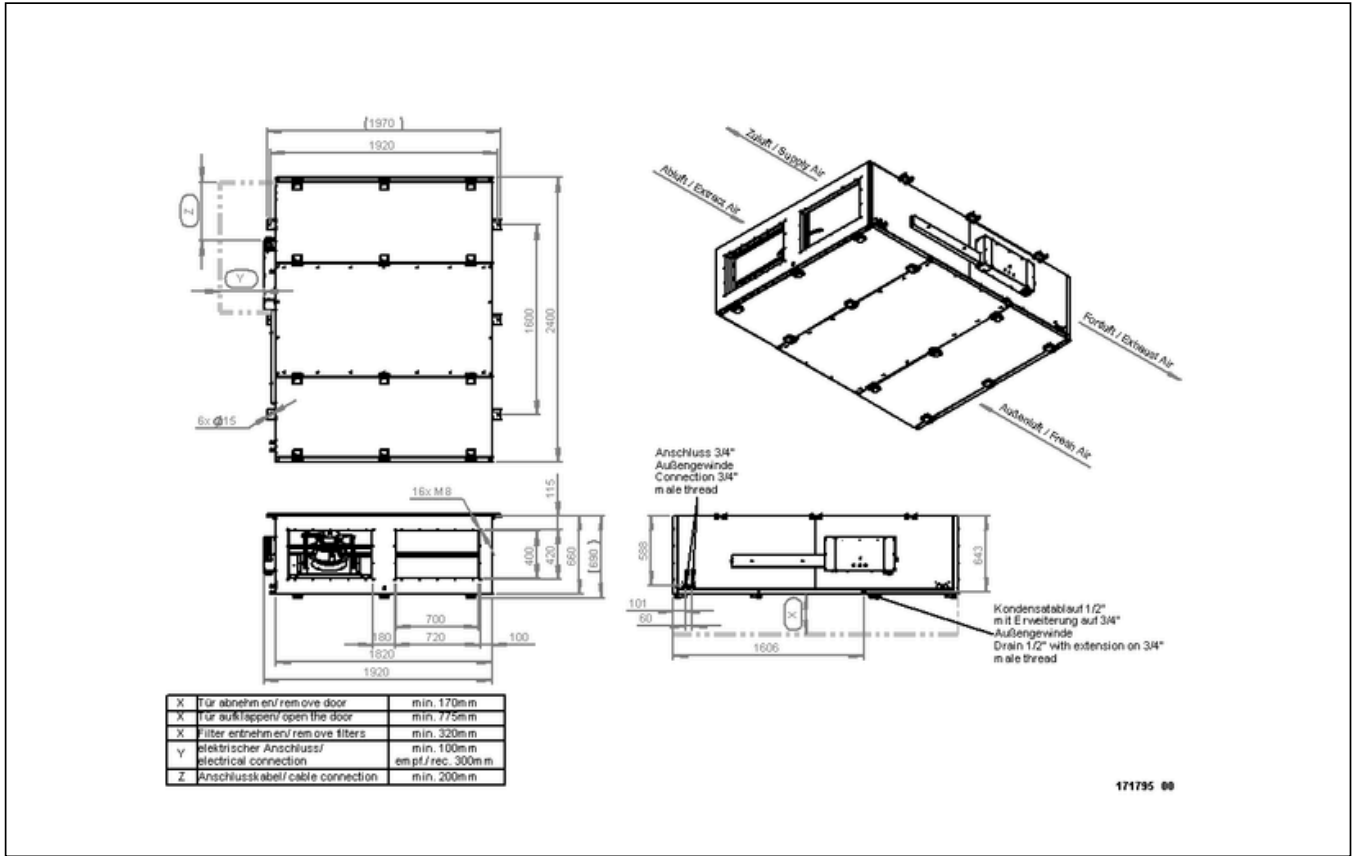
171795



to the product detail page

# ETA K 3500 F WOJL

171795



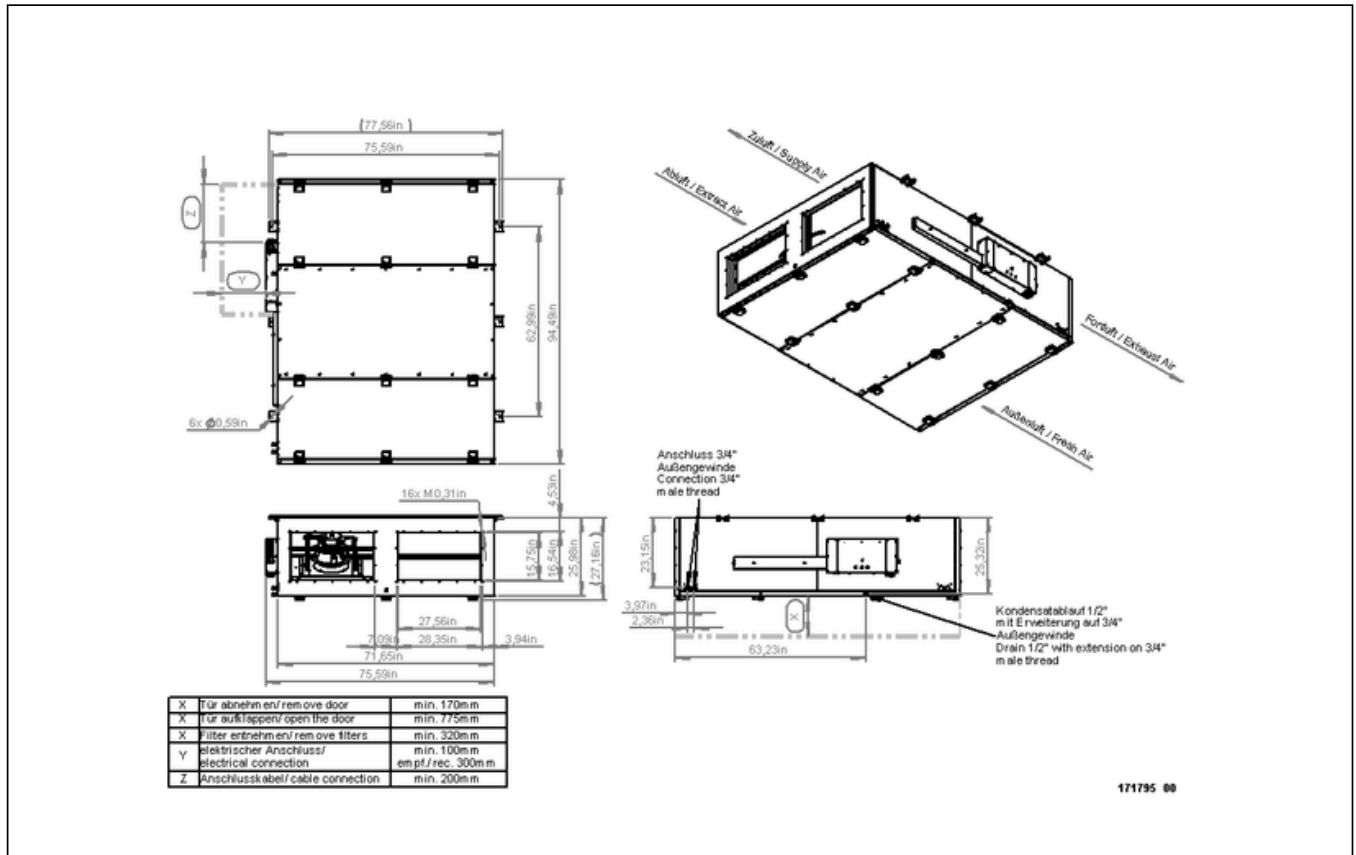
171795 00



to the product detail page

# ETA K 3500 F WOJL

171795



171795 00



to the product detail page