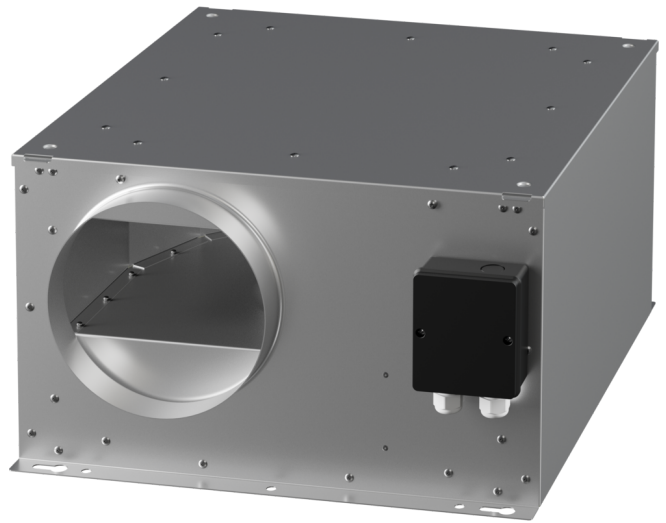


ISORX 315 EC 20

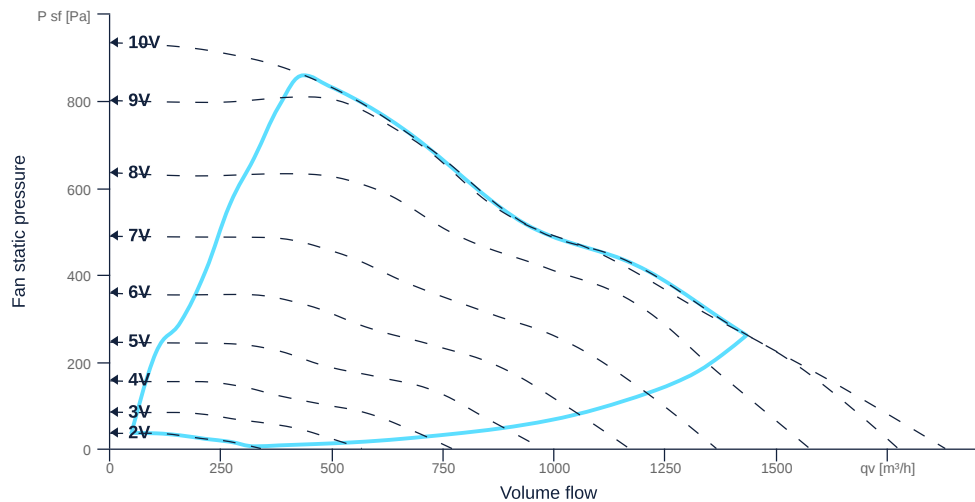
162147

- Backward curved radial impeller
- Optimized aerodynamics
- Soundproof housing made of galvanized sheet steel
- EC motor, external rotor, steplessly controllable
- Conveyed medium temperature up to 55 °C in continuous operation
- Internal electronic temperature monitoring



MAP

Name	Value	Unit
Volume flow	0	m³/h
Pressure	0	Pa



zur Produktseite

ISORX 315 EC 20

162147

ruck

GENERAL DATA

Name	Value	Unit	Formula symbol
ERP conformity	Yes		
Duct size	-		WxHduct
Pipe connection size (DN)	DN315		DN
Rated voltage (entire device)	230	V	U _{rated}
Phases (entire device)	1~		phase
Electrical protection (entire device)	6 A		fuse
Housing material	Galvanized steel		mat _{casing}
Impeller material	Galvanized steel		mat _{impeller}
Weight	22.5	kg	m
Nominal air flow rate, nominal point m ³ /h	1015.2	m ³ /h	q _{v,nom}
Nominal external pressure, static	411.6	Pa	p _{s,nom}
Fan type	Radial		Fan _{type}
Category / Installation situation	A		cat

ERP DATA (LOT 6)

Name	Value	Unit	Formula symbol
Nominal air flow rate, nominal point m ³ /s	0.28	m ³ /s	q _{v,nom}
Actual electrical input power, nominal point	0.23	kW	P _{e,nom}
Face velocity, nominal point	3.6	m/s	v _{nom}
Nominal external pressure, static	411.6	Pa	p _{s,nom}
supply air fan static efficiency, nominal point	56.5	%	η _{es,SUP}
Highest external air leakage rate	0.35	%	
Enclosure sound level, nominal point	72	dB(A)	L _{WA2}
Rating	Product is compliant 2018		



zur Produktseite