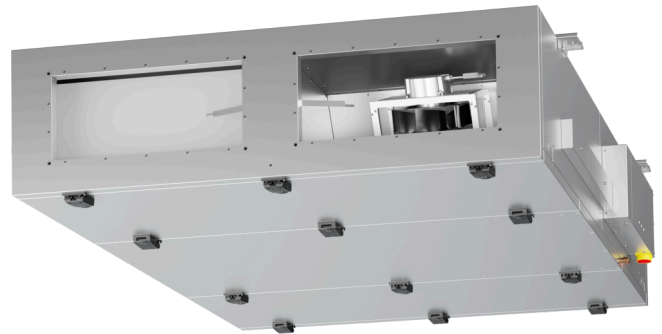


ETA K 3500 F EOJL

171788

- Flat air handling unit with counter flow heat exchanger
- Ceiling mounting, version left
- Frameless, double wall housing made of galvanized steel sheet, insulated
- Constant air flow EC fans, integrated controls
- Automatic summer bypass
- Electric heating, without cooling, panel filter F7/M5
- Constructed acc. to VDI 6022

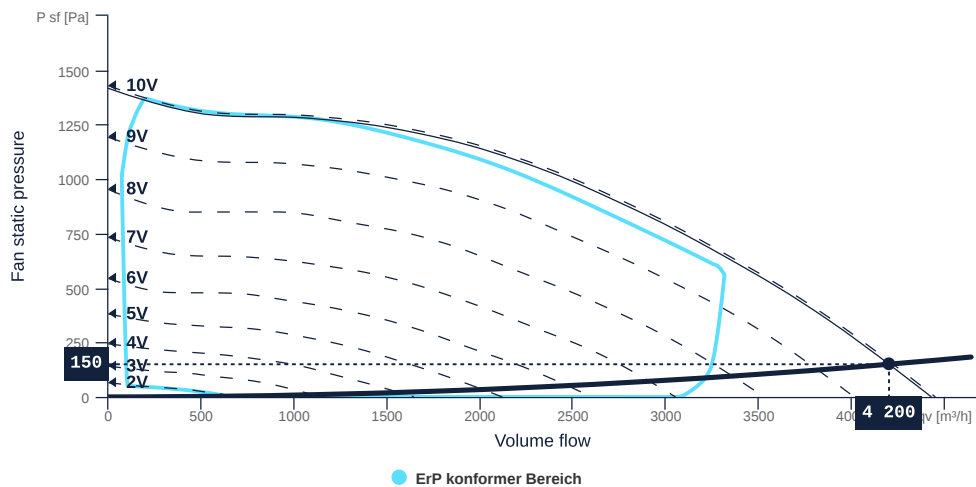


ETA K 3500 F EOJL

171788

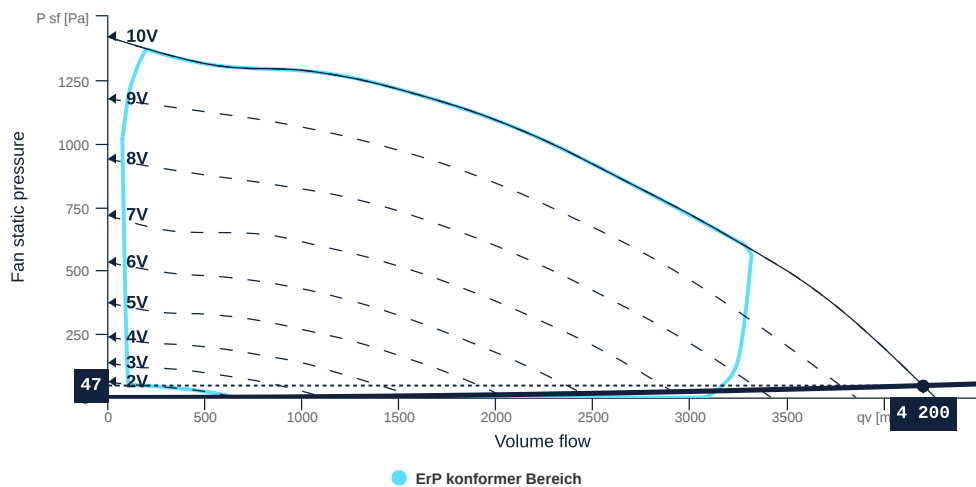
MAP

Name	Value	Unit
Volume flow	4200	m³/h
Pressure	150	Pa



EXTRACT AIR MAP

Name	Value	Unit
Volume flow	4200	m³/h
Pressure	47	Pa



to the product detail page

ETA K 3500 F EOJL

171788

HEAT RECOVERY SUMMER

Name	Value	Unit
Outside air temperature	32	°C
Temperature exhaust air	24	°C
Relative humidity outside air	40	%
Relative humidity exhaust air	40	%

HEAT RECOVERY WINTER

Name	Value	Unit
Outside air temperature	-12	°C
Temperature exhaust air	22	°C
Relative humidity outside air	90	%
Relative humidity exhaust air	40	%

HEAT RECOVERY

Name	Value		Unit	Formula symbol
	summer	winter		
Supply air temperature	25.41	18.39	°C	T_{sup}
Supply air relative humidity	59	9	%	ϕ_{sup}
Transferred power	9.37	42.84	kW	Q
Efficiency	82.4	89.4	%	η
Air pressure drop	220	220	Pa	Δp_v

HEATER ELECTRICAL

Name	Value	Unit
Height above sea level	0	m
Intake air temperature	10	°C
Outlet air temperature	22	°C

Name	Value	Unit	Formula symbol
Supply air temperature	22.0	°C	T_{sup}
Transferred power	16.8	kW	Q
Power max.	27.0	kW	P_{max}
Air pressure drop	316	Pa	Δp_v



to the product detail page

ETA K 3500 F EOJL

171788

TECHNICAL SPECIFICATIONS

Name	Value	Unit	Formula symbol
Volumetric flow (supply air)	4200	m³/h	QVsup
Volumetric flow (extract air)	4199	m³/h	qVeta
Static pressure (supply air)	150	Pa	dpSext sup
Static pressure (extract air)	47	Pa	dpSext eta
Control voltage (supply air)	9	V	Uctrl sup
Rotation speed (supply air)	3780	1/min	Nsup
Control voltage (extract air)	10	V	Uctrl eta
Rotation speed (extract air)	3791	1/min	Neta
SFP (entire device)	2449	W/(m³/s)	sfpdevice
Current consumption Electric	3	A	Ied
Electrical power consumption	2857	W	Pedk
Sound power level outdoor air	71	dB(A)	LWAoda
Sound power level supply air	93	dB(A)	LWAsup
Sound power level extract air	71	dB(A)	LWAeta
Sound power level exhaust air	93	dB(A)	LWAeha
Sound power level housing	70	dB(A)	LWA casing

SOUND DATA

Sound power	mid-frequency tape										Unit	Formula symbol
	Σ	63	125	250	500	1000	2000	4000	8000	16000		
outside air	72	57	60	66	65	67	62	49	40	21	dB(A)	LWAoda
supply air	93	63	71	87	86	88	87	82	76	60	dB(A)	LWAsup
exhaust air	71	55	61	66	65	66	59	48	40	22	dB(A)	LWAeta
exhaust air	93	63	73	85	86	88	86	82	75	59	dB(A)	LWAeha
housing	70	61	62	68	60	58	53	48	42	25	dB(A)	LWA casing

SOUND PRESSURE LEVEL CALCULATOR

Name	Value	Unit
Enveloping surface	Halphsphere	
Distance	3	m

Sound pressure	NR	mid-frequency tape										Unit	Formula symbol
		Σ	63	125	250	500	1000	2000	4000	8000	16000		
outside air	49	54	40	42	48	48	49	44	32	22	3	dB(A)	LWAoda
supply air	71	76	46	54	69	68	71	69	65	58	42	dB(A)	LWAsup
exhaust air	21	28	19	25	22	19	19	11	2	0	0	dB(A)	LWAeta
exhaust air	42	47	28	36	38	38	42	40	36	23	3	dB(A)	LWAeha
housing	46	50	43	41	47	38	37	32	25	21	5	dB(A)	LWA casing



to the product detail page

ETA K 3500 F EOJL

171788

ruck

GENERAL DATA

Name	Value	Unit	Formula symbol
Labeling	CE, UKCA		
Duct size	700x400		WxH _{duct}
Rated voltage (entire device)	400	V	U _{rated}
Phases (entire device)	3-N		phase
Electrical protection (entire device)	6 A		fuse
Housing material	Galvanized steel		mat _{casing}
IP-protection class (casing)	IP41		IP _{casing}
IP-protection class (entire device)	IP41		IP _{compl}
IP-Protection class (terminal box)	IP44		IP _{ebox}
Weight	402	kg	m
Nominal air flow rate, nominal point m ³ /h	2930.4	m ³ /h	q _{vnom}
Nominal external pressure, static	200	Pa	p _{s,nom}
Connection side supply air	Left		L/R
Type of the ventilation-unit	BVU - supply air		AHU _{type}
Type of heat-recovery-system	recuperative		HRS _{type}
Type of the heater	Electrical		H _{type}
Type of cooler	No		C _{type}
Outdoor installation	No		outdoor
Leak class	L2		L _{class}
Speed control	variable speed control		VSD _{type}
Filter class extract air	ISO ePM10 50%		F _{class, eta}
Filter class supply air	ISO ePM1 55%		F _{class, sup}
Mechanical stability class	D2		D _{class}

to the product detail page



ERP DATA (LOT 6)

Name	Value	Unit	Formula symbol
Energy performance supply air filter		E	
Energy performance extract air filter		E	
Thermal efficiency HRS, Nominal-point	84.83	%	tNRVU
Nominal air flow rate, nominal point m ³ /s	0.81	m ³ /s	q _{v,nom}
Actual electrical input power, nominal point	1.45	kW	P _{e,nom}
Internal specific fan power, nominal point	1081.95	Ws/m ³	SFP _{int}
Face velocity, nominal point	3.18	m/s	V _{nom}
Nominal external pressure, static	200	Pa	p _{s,nom}
supply air fan static efficiency, nominal point	54.67	%	η _{es,SUP}
static efficiency of the extract fan, nominal point	61.07	%	η _{es,EHA}
Highest external air leakage rate	0.67	%	
Enclosure sound level, nominal point	66.76	dB(A)	LWA2
Rating	Product is compliant 2018		
Internal pressure drop of ventilation components supply air, nominal point	282.54	Pa	dp _{vent,nom,int,SUP}
Internal pressure drop of ventilation components extract air, nominal point	345.17	Pa	dp _{vent,nom,int,EHA}

MAXIMAL DATA

Name	Value	Unit	Formula symbol
Max. power consumption (device)	3000	W	P _{ed,max}
Max. operating current (device)	4.7	A	I _{ed,max}
Max. speed	3800	1/min	n _{max}
Max. stat. efficiency	43.6	%	η _{es}
Max. fan efficiency	43.8	%	η _e
Max. flowrate	4450	m ³ /h	q _{v,max}
Max. stat pressure	1430	Pa	p _{sf,max}
Max. medium temperature	40	°C	T _{m,max}
Max. environment temperature	40	°C	T _{amb,max}
Min. environment temperature	-20	°C	T _{amb,min}

FILTER DATA

Name	Value	Unit	Formula symbol
Degree of separation (supply air)	55	%	
Degree of separation (extract air)	50	%	
Filter group (extract air)	ISO ePM10		
Fitter group (supply air)	ISO ePM1		

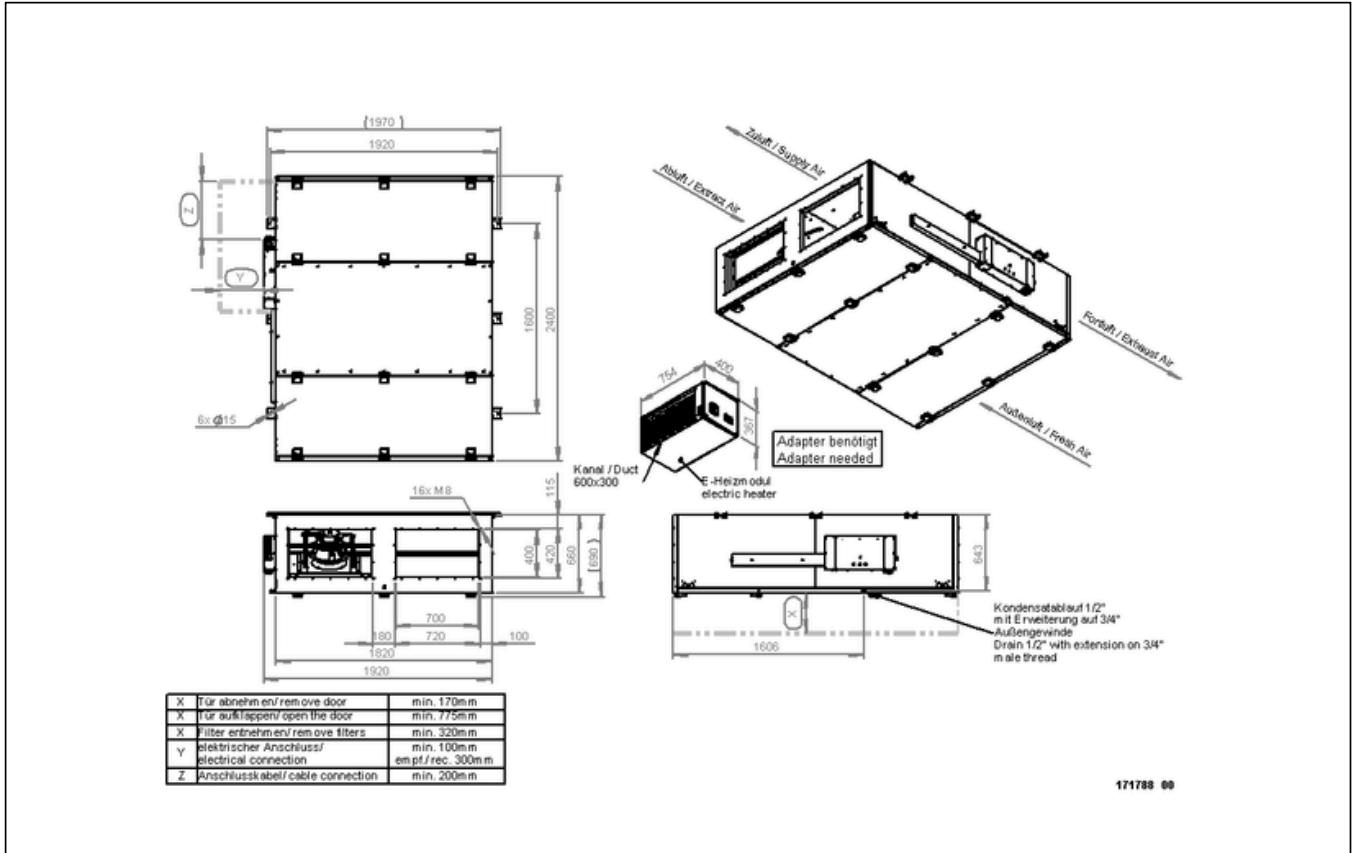


to the product detail page

ETA K 3500 F EOJL

171788

CIRCUIT DIAGRAMS / DIMENSIONAL DRAWINGS

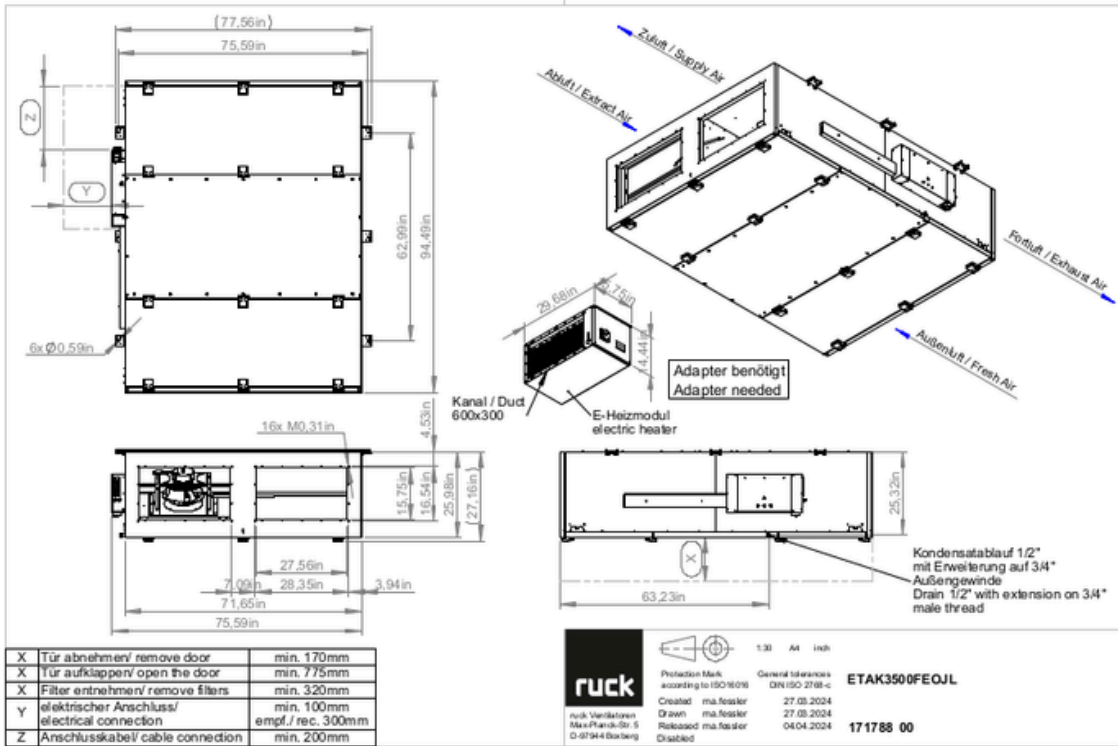


171788 00



ETA K 3500 F EOJL

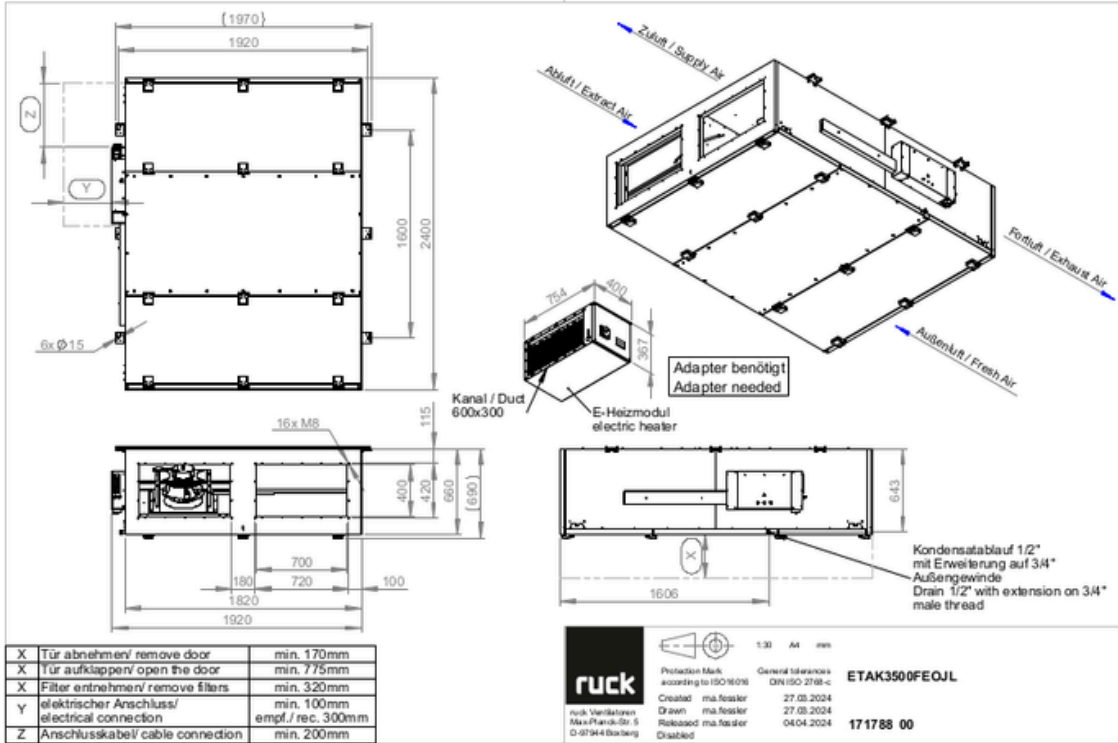
171788



to the product detail page

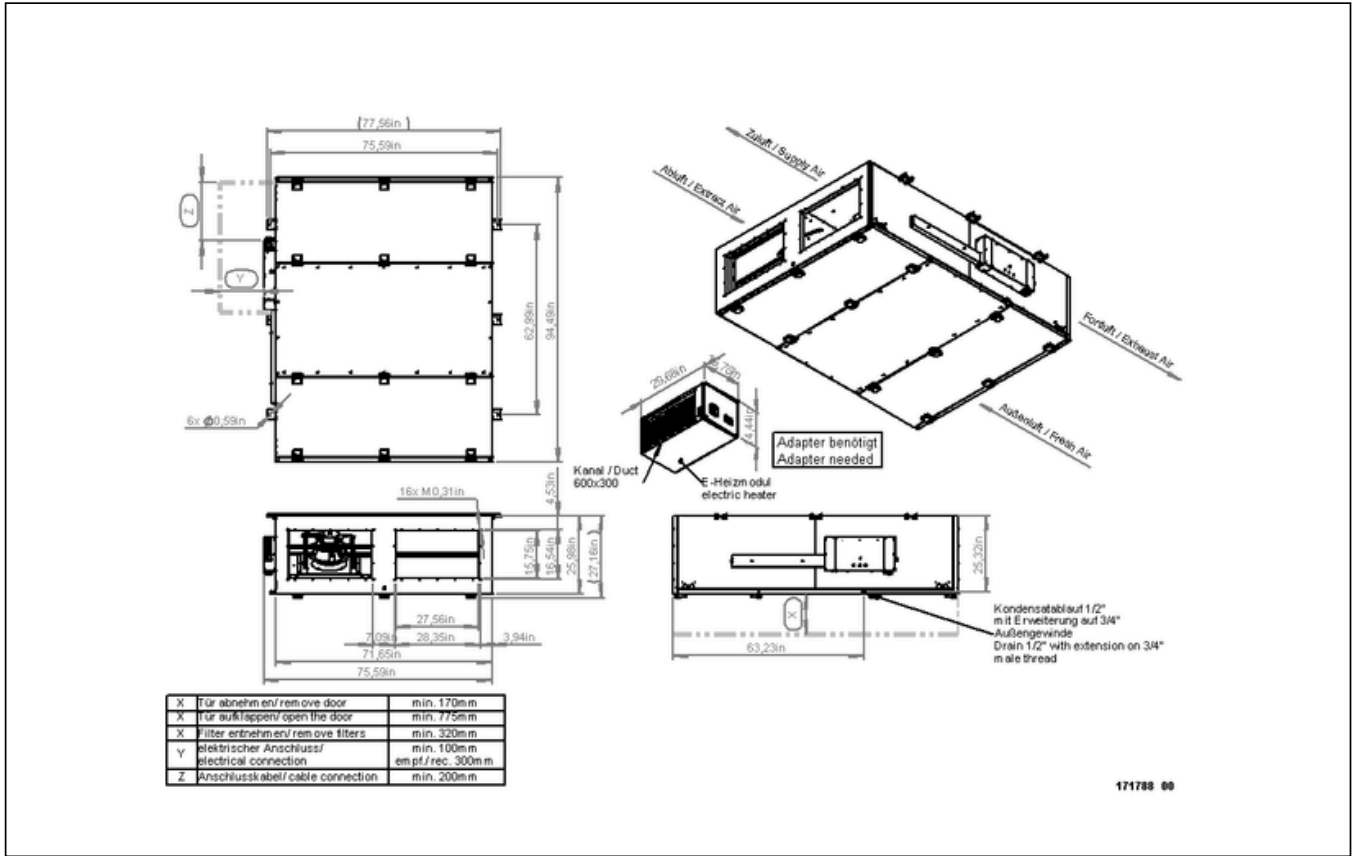
ETA K 3500 F EOJL

171788



ETA K 3500 F EOJL

171788



171788 00



to the product detail page