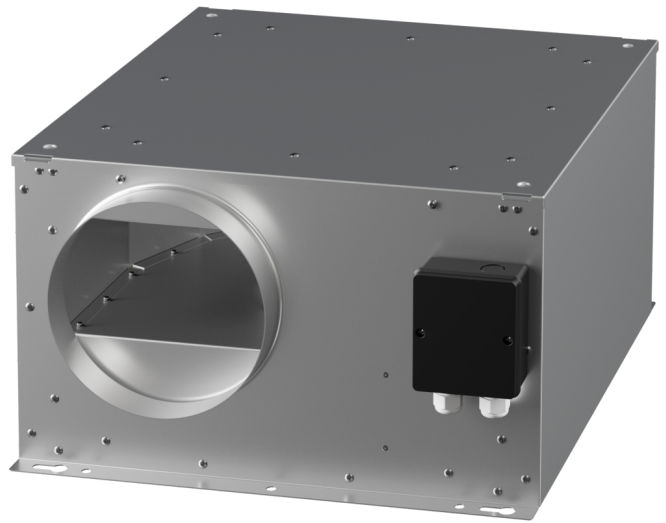


ISORX 100 EC 20

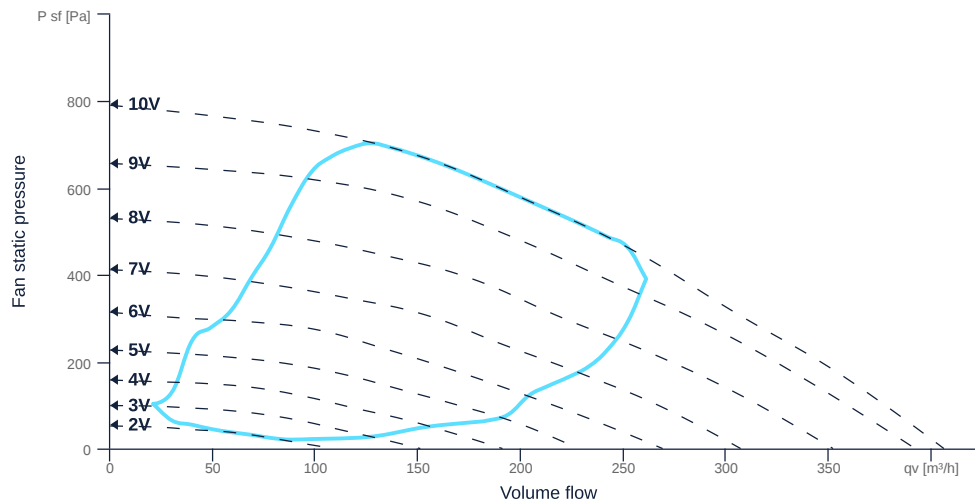
162129

- Backward curved radial impeller
- Optimized aerodynamics
- Soundproof housing made of galvanized sheet steel
- EC motor, external rotor, steplessly controllable
- Conveyed medium temperature up to 60 °C in continuous operation
- Internal electronic temperature monitoring



MAP

Name	Value	Unit
Volume flow	0	m³/h
Pressure	0	Pa



zur Produktseite

ISORX 100 EC 20

162129

ruck

GENERAL DATA

Name	Value	Unit	Formula symbol
ERP conformity	Yes		
Duct size	-		WxHduct
Pipe connection size (DN)	DN125		DN
Rated voltage (entire device)	230	V	U _{rated}
Phases (entire device)	1~		phase
Electrical protection (entire device)	6 A		fuse
Housing material	Galvanized steel		mat _{casing}
Impeller material	Plastic		mat _{impeller}
Weight	10.9	kg	m
Nominal air flow rate, nominal point m ³ /h	162	m ³ /h	q _{Vnom}
Nominal external pressure, static	549.2	Pa	p _{s,nom}
Fan type	Radial		Fan _{type}
Category / Installation situation	A		cat

ERP DATA (LOT 6)

Name	Value	Unit	Formula symbol
Nominal air flow rate, nominal point m ³ /s	0.05	m ³ /s	q _{V,nom}
Actual electrical input power, nominal point	0.07	kW	P _{e,nom}
Face velocity, nominal point	5.8	m/s	v _{nom}
Nominal external pressure, static	549.2	Pa	p _{s,nom}
supply air fan static efficiency, nominal point	45.8	%	η _{es,SUP}
Highest external air leakage rate	1.69	%	
Enclosure sound level, nominal point	63	dB(A)	L _{WA2}
Rating	Product is compliant 2018		



zur Produktseite