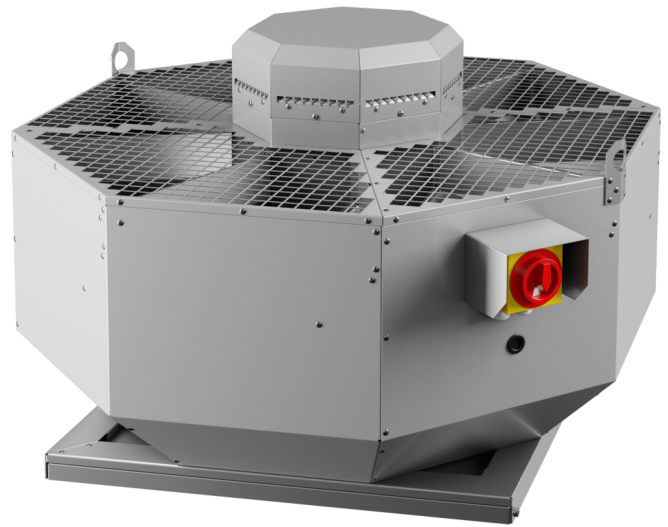


DVL 560 D4 RK - 01

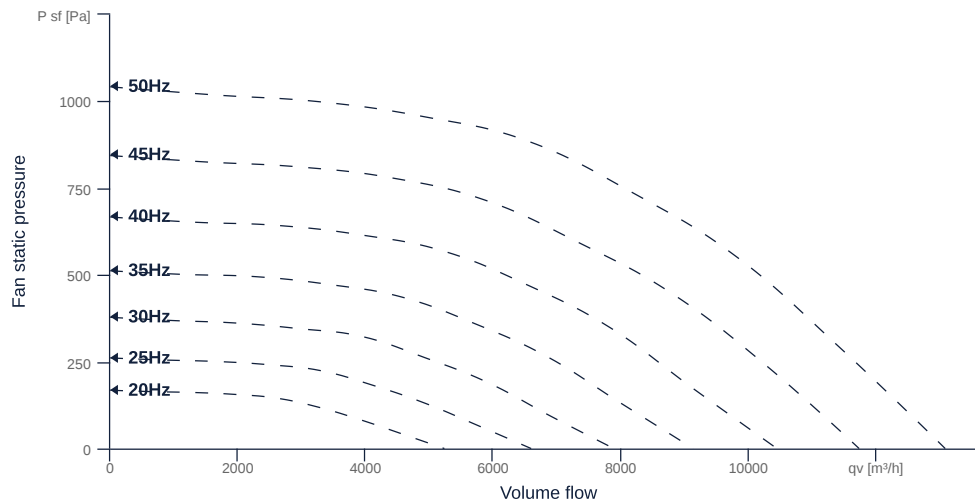
160877

- Backward curved radial impeller
- Vertical discharge
- Hinged housing made of aluminum AlMg3
- Efficient IE3 motor, frequency controllable
- Conveyed medium temperature up to 60 °C in continuous operation
- Integrated device switch



MAP

Name	Value	Unit
Volume flow	0	m³/h
Pressure	0	Pa



zur Produktseite

DVL 560 D4 RK - 01

160877

ruck

GENERAL DATA

Name	Value	Unit	Formula symbol
ERP conformity	Yes		
Duct size	-		WxHduct
Pipe connection size (DN)	-		DN
Rated voltage (entire device)	400	V	U _{rated}
Phases (entire device)	3~		phase
Electrical protection (entire device)	6 A		fuse
Housing material	Aluminium		matcasing
Impeller material	Steel		matimpeller
Weight	79.8	kg	m
Nominal air flow rate, nominal point m ³ /h	7462.8	m ³ /h	q _{v,nom}
Nominal external pressure, static	814.6	Pa	p _{s,nom}
Fan type	Radial		Fa _{type}
Category / Installation situation	A		cat

ERP DATA (LOT 6)

Name	Value	Unit	Formula symbol
Nominal air flow rate, nominal point m ³ /s	2.07	m ³ /s	q _{v,nom}
Actual electrical input power, nominal point	2.56	kW	P _{e,nom}
Face velocity, nominal point	3	m/s	v _{nom}
Nominal external pressure, static	814.6	Pa	p _{s,nom}
supply air fan static efficiency, nominal point	63.4	%	η _{es,SUP}
Enclosure sound level, nominal point	91	dB(A)	L _{WA2}
Rating	Product is compliant 2018		



zur Produktseite